



Justrite Safety Group



Uwe
Rudnick
Rudhandel

Logo Mats and Custom Printing Mats

www.notrax.eu

Catalogue Nr. L-2



Index and Guide

Notrax® Matting Pictograms..... 3
Product Testing 3
About Notrax® 4
Warranty 5
Benefits of Entrance Mats 6

| Art. Code | Product name | Page |
|-----------|----------------|-------|
| 190 | Logo Washable™ | 8/9 |
| 010 | Uni Washable™ | 8/9 |
| 199 | Logo Imperial™ | 10/11 |

| Art. Code | Product name | Page |
|-----------|-----------------------|-------|
| 019 | Uni Imperial™ | 10/11 |
| 198 | Logo Superior™ | 12/13 |
| 018 | Uni Superior™ | 12/13 |
| 193 | Logo Standard™ | 14/15 |
| 015 | Uni Standard™ | 14/15 |
| 178 | Déco Design™ Superior | 18/19 |
| 179 | Deco Design™ Imperial | 18/19 |
| 170 | Déco Design™ Washable | 18/19 |
| 175 | Déco Design™ Standard | 18/19 |



Notrax® Matting Testing & Pictograms

Notrax® Mats for Professional Use are subject to rigorous testing by independent laboratories prior to their introduction to the market. Our Product Testing Chart shows the following relative comparisons between the Notrax® mats featured in this brochure:

Example Product Testing Chart

Product Testing



Water Retention

Indicates the moisture retention of an entrance mat during actual usage. The higher the pointer in the test chart, the more litres of water per square meter that can be contained within the mat.

Crush Resistance

Indicates the time it takes for a mat to lose its attractive appearance and functionality. This test simulates the wear an entrance mat will receive under normal foot traffic. The higher the pointer in the test chart, the greater its resistance to wear and crushing.

Dust Control

Indicates the amount of debris an entrance mat can capture, hold and hide during actual usage. The effectiveness of this function is owed to a combination of manufacturing techniques and the quality of yarns used. The higher the pointer in the test chart, the more debris is scraped off shoes.



Indoors
For indoor use.



Heavy Traffic
Suitable for heavy foot traffic conditions in busy public areas, hospitality and commercial environments.



Wheelchair friendly
Smooth top surface or low profile and bevelled edges are ideal for wheelchairs, carts or suitcase wheels.



Portico
Can be used outdoors in protected, covered or portico areas that are not exposed to rain.



Medium Traffic
Suitable for medium foot traffic conditions in schools, offices and retail environments.



Washable
Washable up to 50° Celsius.



Outdoors
Can be used outdoors in any weather.



Light Traffic
Suitable for light foot traffic conditions in offices and retail shops.



Fire Retardant
Fire rating of Bfl-S1 or Cfl-S1 tested according to EN 13501-1. Matting is designed to resist the spread of fire, substantiated by test certifications from independent laboratories.



Absorbing
Absorption capacity is measured in litres per square meter.



Dirt Scraping
Scraping function removes dirt from soles to prevent dirt and grime from entering the building.

Notrax® Mats for Professional Use

Notrax® is often referred to as one of the pioneers in matting design and manufacturing. This is not surprising because since our founding in 1948, we have been committed to making quality products and optimizing processes.





Founded in 1948 by
Charles J. Wood (far right).

Notrax® has a full selection of outdoor and indoor entrance matting for professional use. Notrax® professional dust control matting products are designed to:

- Remove dirt and moisture from shoes
- Prevent debris from travelling within facilities
- Make entrance ways look clean and tidy
- Reduce slip hazards

Up to 80% of interior soil is brought into facilities from foot traffic. The utilization of matting ensures that the majority of dirt will be stopped at the entrance and will not build up on floors. This reduces floor maintenance and the need for cleaning chemicals significantly. Matting also extends the life of the floor by absorbing much of the initial abuse.

Entrance matting helps to reduce the risk of slips and falls. The absorbing function of mats dries shoes to prevent slipping while rubber or vinyl backing that is moisture resistant and slip resistant prevents the mat from shifting to prevent sliding, tripping or falls even further. Notrax® has a range of single zone, multi-zone and multi-functional mats in a variety of colours and materials that suit any entrance to create a total entrance matting solution for a comfortable and safe environment.

Product Innovation

Our brand of Notrax® mats for professional use has become synonymous with quality, flexibility and customer service. What started as a small family-owned mat repair company has quickly grown to a global company, and now as part of the Justrite Safety Group, we excel in the design and manufacture of anti-fatigue matting, safety matting and entrance matting for industrial and commercial applications. As interior and building design advances and product manufacturing processes evolve, so do our matting products. Our innovations team continues to design state-of-the-art products through intense research and development using new technologies, new design techniques and new ideas. We are constantly seeking new ways to meet the changing needs of the industry. We focus on customer problems and working together with them to create matting solutions. Notrax® products are sold globally through our trusted distributor network of matting experts, operating in niche segments of aggregate suppliers, cleaning and hygiene, installation experts, interior designers, project developers, and many more.

Understanding and responding to the markets' specific needs reflects our interest and pleasure in serving our distributors and their customers. Examples of this include the development of mass customization capabilities and online integration with customers. As one of the world's largest integrated manufacturers of mats for professional use, our belief in strong relationships is the foundation of our business.

With facilities in Europe and the United States, we constantly seek to reduce the environmental impact of our processes. This means that we aim to grow our business in an environmentally responsible manner, and we do this by focusing on diminishing waste, using recycled materials where possible, and by obtaining materials from sustainable sources.



The "Lean" organization of our operations not only enables us to stay competitive and provide fast service, it also enables our customers to participate in a joint effort to reduce the carbon footprint simply by making use of our electronic purchasing and invoicing services and drop shipment capabilities.

R.E.A.C.H.

REACH is the European Community Regulation on chemicals and their safe use (EC 1907/2006). It deals with the Registration, Evaluation, Authorisation and Restriction of Chemical substances. The law entered into force on 1 June 2007 assigns manufacturers the responsibility of providing high level human and environmental protection from the use of chemicals in manufacturing. Notrax® does not use any substances currently included on the SVHC (Substances of Very High Concerns) list under REACH, including Di-octyl phthalate (DOP) plasticizer. Further information about our stand on sustainability can be obtained at www.buynotrax.eu for registered distributors or upon email request to europe@notrax.com.

Product Warranty

All Notrax® floor matting is manufactured of the highest quality material and workmanship. Dependability and service of our products are guaranteed against defects in material for one year from date of purchase provided manufacturer's recommended usage and maintenance is followed. Buyer has the responsibility to determine the suitability of the product and assumes any liability in connection with such use. Seller shall not be liable for damages in excess of purchase price of product. Warranty does not apply to added bevelled nosing, splicing or seaming of mats. In the unlikely event of a Notrax product being faulty, a full refund or replacement (based on manufacturer's discretion) will be made. Warranty claims must be authorized for return and shipped prepaid for inspection and evaluation. For information about floor matting maintenance: www.notrax.eu/news.

This catalogue highlights the solutions Notrax® offers for your professional dust control entrance matting applications. Feel free to also ask for the latest Notrax® brochure for Ergonomic, Anti-fatigue & Safety Matting.

Thank you for choosing Notrax®.

René Vieveen
Managing Director

Justrite Safety Group

Benefits of Entrance Mats

The entrance is the building's first impression. As with any introduction – to people, places, or products – first impressions are critical. Entrances have to satisfy a variety of requirements including attractive design, high throughput rate (even during the busiest of times) and excellent functionality.



The benefits of entrance mats have been recognized by many sustainable and environmental building assessors, such as LEED (Leadership in Energy and Environmental Design) and BREEAM (Building Research Establishment Environmental Assessment Method).

Entrance mats reduce cleaning costs

70-80% of the dust, dirt and grime in public buildings is tracked in from the outside and spread throughout floors (International Sanitary Supply Association). Over a 20-day period, 1000 people can walk in 9.6 kilograms (24 pounds) of dirt into a building (ISSA). Twelve times as much dirt is tracked in during wet weather conditions based on field tests conducted by BST Laboratory over an 11-month period.

Entrance mats contribute to improved indoor air quality

Indoor air pollution is one of the top five environmental risks to public health as indoor air is found to be up to 70 times more polluted than outdoor air (Environmental Protection Agency) and most people spend 60-90% of their time indoors. (American Lung Association). Controlling the concentration of particulates through prevention and cleaning can help relieve symptoms and prevent disease. Outside dirt can cause breathing problems, allergies and aggravate asthma.

Entrance mats protect and preserve interior flooring

Constant tracking of dirt into the building is also a prime factor in the wearing of interior floors and carpeting. Dirt and soils have a texture that is similar to a razor which are ground into floors during walking, causing scraping on smooth flooring and as carpets are walked on, their fibres can be frayed.

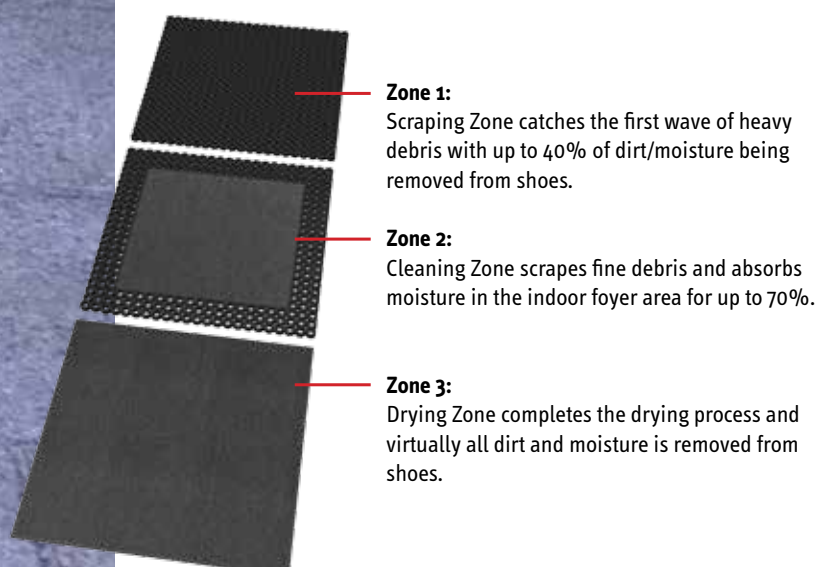
Within the first 6 feet, 42% of the floor's finish or carpet nap will be removed after only 1500 people have entered. Entrance mats absorb much of the initial abuse to extend the life of interior flooring.

Entrance mats help to prevent slips, trips and falls

Wet, slippery floors are dangerous. Entrance matting also reduces the risk of slips and falls. The absorbing function of mats dries shoes to prevent slipping. Entrance matting can absorb up to 5 litres of water per square meter to ensure that shoes are dried properly to avoid slips and falls on wet floors. Rubber or vinyl backing that is moisture resistant and slip resistant prevents the mat from shifting to prevent sliding, tripping or falls even further.

The Zones

Matting solutions that are successful in stopping dirt and preventing slips and falls, address three major zones:



Logo Mats and Custom Printed Mats

Logo matting provides the option to completely customize a quality dust control entrance mat with the company image, logo or message for powerful branding. The entrance mat becomes a large promotional opportunity to enhance your company identity and truly welcome guests because as they enter most people primarily look to the floor.



High definition printing

Notrax® uses the latest high definition printing technology, making it easy to print complex logo designs, shading and 3 dimensional effects. Our high resolution printing results in a photo quality print with superior image representation. The sharp definition of fine lines, contours and smooth gradations produces precise details for each mat, creating a truly individual image. The height of the carpet pile enhances the depth of the image for an even richer effect.

Unlimited colour possibilities

Notrax® logo mats are printed with an extended process colour printing method that produces vibrant, stable colours with almost infinite colour possibilities. The large colour variations allow vivid colours, superb blacks for stark contrasts, and smooth gradations for infinite shading resulting in exceptional photo quality printing to really make the logo stand out.

Multi-coloured logos, complicated designs, artwork and even photos can easily be replicated. Select any of the thousands of Notrax® existing colours, or supply a PMS (Pantone Matching System), RAL (Reichs-Ausschuss für Lieferbedingungen) or other colour matching system codes, and we will do our best to match your colours for a true representation of your branding.

Match Your Mat™

BrilliantStep™ can also be printed in just one colour to match your mat to any interior design or colour scheme. Uni-coloured mats can also be used together with the custom printed logo mats for a completely colour coordinated matting system.



Custom lengths and sizes

As with all Notrax® products, Notrax® loose lay entrance mats are available in a multitude of standard sizes, custom lengths, and per linear meter.

Our specialized production team can customize Notrax® logo mats to any size, shape or length with mounted bevelled nosing to finish off the mat and prevent tripping. Even special shapes or forms, including circles, half-moons, and arches can be produced.



Indoor Absorbent Printed

190 Logo Washable™ - 010 Uni Washable™

Functional and washable logo entrance mat that can be completely personalized using BrilliantStep™ full colour printing with almost infinite colour combinations. The open Frieze tuft gives true depth of colour and a trackless surface making it more durable as well as more effective in hiding dirt and foot traffic. Nitrile rubber backing is washable up to 50°C with cleated pattern to minimize movement on all surfaces and to keep the mat elevated on hard floors to allow drying underneath.





190 Logo Washable™

Logo Washable™ can be fully customized with BrilliantStep™ state-of-the-art printing technology allowing 3-dimensional effects, fine lines and colour shading, for each mat to have its truly individual image.

Artwork is supplied within 24-hours. The mat is printed 24 hours after the artwork approval is given.

Recommended use:

- Suitable for medium to heavy traffic conditions
- For placement inside entrances of hotels, shops, department stores, schools, universities, restaurants, supermarkets

Specifications:

- Tufted Frieze cut loop pile consisting of 100% non-crush polyamide 6.6 high twist yarns
- 700 grams of yarns per m²
- Backing: nitrile rubber
- Nitrile rubber borders: 2.5 cm on each side
- Overall thickness: 8.5 mm
- Weight: 2.8 kg per m²
- Fire rating: EN 13501-1 Bfl-S1

Stock sizes:

- 60 cm x 85 cm
- 85 cm x 115 cm
- 85 cm x 150 cm
- 115 cm x 180 cm

Cleaning tip:

- Machine washable at 50 °C or vacuum clean

010 Uni Washable™

Uni Washable™ can be printed as a mono-coloured mat in full colour to match your mat to any interior colour scheme or to use together with the custom printed logo mats for a colour coordinated matting system.

Recommended use:

- Suitable for medium to heavy traffic conditions
- For placement inside entrances of hotels, shops, department stores, schools, universities, restaurants, supermarkets

Specifications:

- Tufted Frieze cut loop pile consisting of 100% non-crush polyamide 6.6 high twist yarns
- 700 grams of yarns per m²
- Backing: nitrile rubber
- Nitrile rubber borders: 2.5 cm on each side
- Overall thickness: 8.5 mm
- Weight: 2.8 kg per m²
- Fire rating: EN 13501-1 Bfl-S1

Stock sizes:

- 60 cm x 85 cm
- 85 cm x 115 cm
- 85 cm x 150 cm
- 115 cm x 180 cm

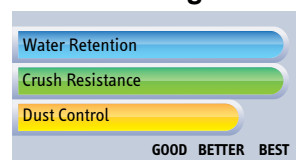
Cleaning tip:

- Machine washable at 50 °C or vacuum clean

Product Testing



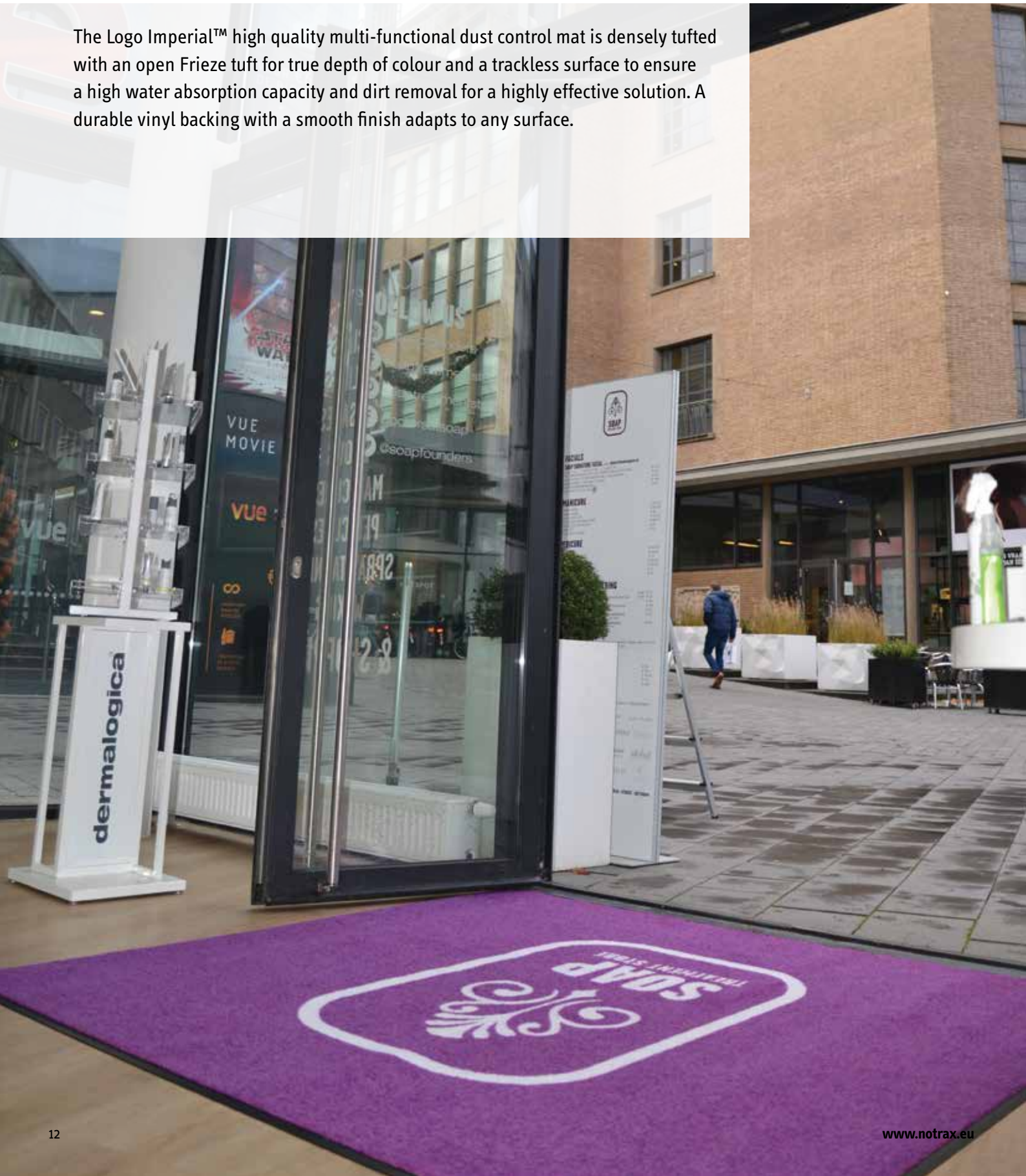
Product Testing



Indoor Absorbent Printed

199 Logo Imperial™ - 019 Uni Imperial™

The Logo Imperial™ high quality multi-functional dust control mat is densely tufted with an open Frieze tuft for true depth of colour and a trackless surface to ensure a high water absorption capacity and dirt removal for a highly effective solution. A durable vinyl backing with a smooth finish adapts to any surface.





199 Logo Imperial™

Logo Imperial™ can be fully customized with BrilliantStep™ state-of-the-art printing technology allowing 3-dimensional effects, fine lines and colour shading, for each mat to have its truly individual image.

Artwork is supplied within 24-hours. The mat is printed 24 hours after the artwork approval is given.

Recommended use:

- Suitable for medium to heavy traffic conditions
- For placement inside entrances of hotels, shops, department stores, schools, universities, restaurants, supermarkets

Specifications:

- Tufted velours cut loop pile consisting of 100% non-crush polyamide 6.6 high twist yarns
- 700 grams of yarns per m²
- Backing: black vinyl (DOP free)
- Vinyl borders: 2.5 cm on each side
- Overall thickness: 8.5 mm
- Weight: 2.8 kg per m²
- Fire rating: EN 13501-1 Bfl-S1

Stock sizes:

- 60 cm x 90 cm
- 90 cm x 120 cm
- 90 cm x 150 cm
- 120 cm x 180 cm
- 120 cm x 240 cm

Custom lengths and custom sizes:

- Up to 135 cm wide per linear meter
- Up to 150 cm wide per linear meter
- Up to 200 cm wide per linear meter

Cleaning tip:

- Vacuum clean

019 Uni Imperial™

Uni Imperial™ is a mono-coloured mat printed in any colour to match your mat to any interior or to use together with the custom printed logo mats for a colour coordinated matting system.

Recommended use:

- Suitable for medium to heavy traffic conditions
- For placement inside entrances of hotels, shops, department stores, schools, universities, restaurants, supermarkets

Specifications:

- Tufted Frieze cut loop pile consisting of 100% non-crush polyamide 6.6 high twist yarns
- 700 grams of yarns per m²
- Backing: black vinyl (DOP free)
- Vinyl borders: 2.5 cm on each side
- Overall thickness: 8.5 mm
- Weight: 2.8 kg per m²
- Fire rating: EN 13501-1 Bfl-S1

Stock sizes:

- 60 cm x 90 cm
- 90 cm x 120 cm
- 90 cm x 150 cm
- 120 cm x 180 cm
- 120 cm x 240 cm

Custom lengths and custom sizes:

- Up to 135 cm wide per linear meter
- Up to 150 cm wide per linear meter
- Up to 200 cm wide per linear meter

Cleaning tip:

- Vacuum clean

Product Testing



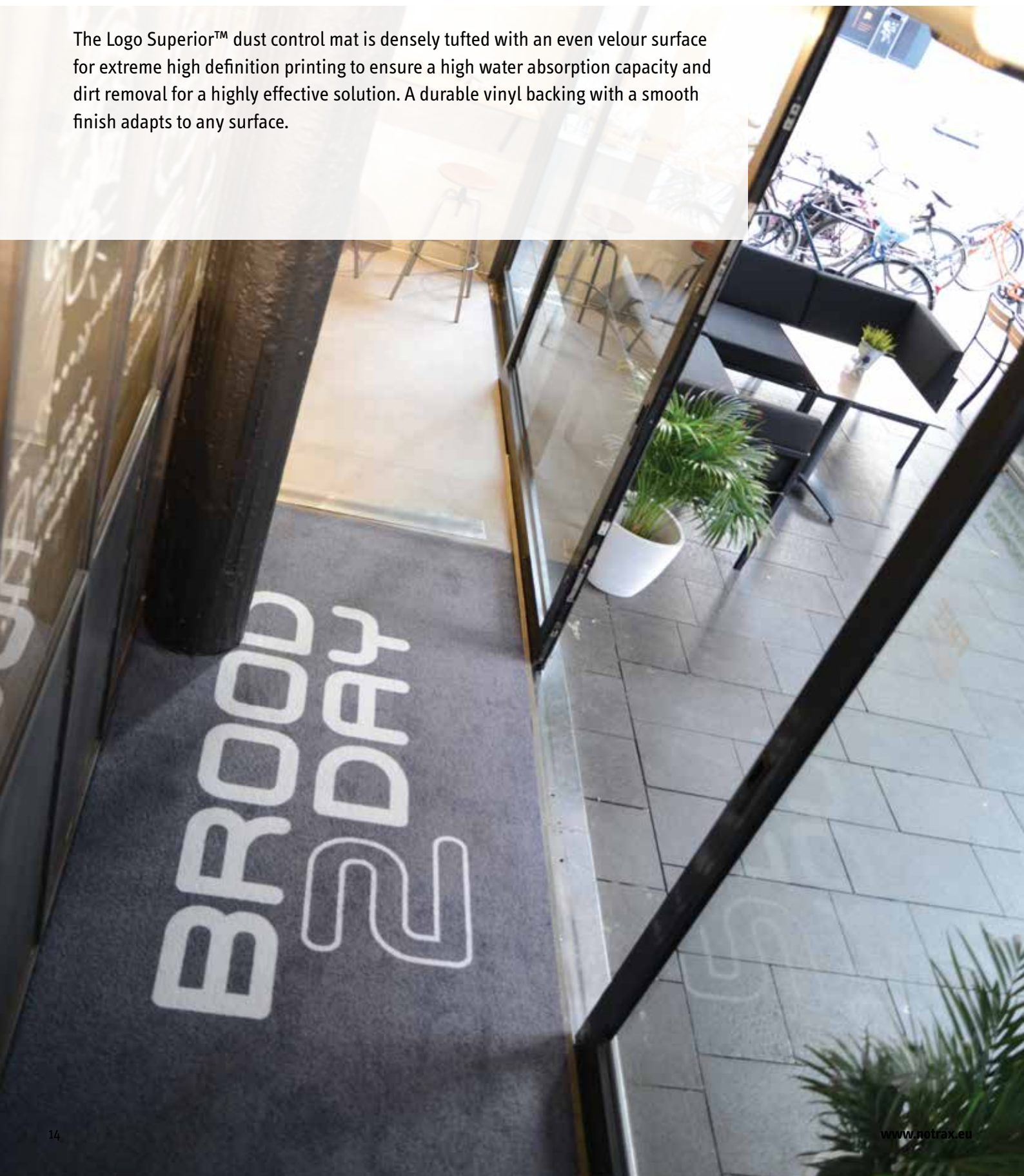
Product Testing



Indoor Absorbent Printed

198 Logo Superior™ - 018 Uni Superior™

The Logo Superior™ dust control mat is densely tufted with an even velour surface for extreme high definition printing to ensure a high water absorption capacity and dirt removal for a highly effective solution. A durable vinyl backing with a smooth finish adapts to any surface.





198 Logo Superior™

Logo Superior™ can be fully customized with BrilliantStep™ state-of-the-art printing technology allowing 3-dimensional effects, fine lines and colour shading, for each mat to have its truly individual image.

Artwork is supplied within 24-hours. The mat is printed 24 hours after the artwork approval is given.

Recommended use:

- Suitable for medium to heavy traffic conditions
- For placement inside entrances of hotels, shops, department stores, schools, universities, restaurants, supermarkets

Specifications:

- Tufted cut loop pile consisting of 100% non-crush polyamide 6.6 twist yarns
- 600 grams of yarns per m²
- Backing: black vinyl (DOP free)
- Vinyl borders: 2.5 cm on each side
- Overall thickness: 8 mm
- Weight: 3 kg per m²
- Fire rating: EN 13501-1 Bfl-S1

Recommended accessories:

- 083 Bevelled Nosing 2 mm

Stock sizes:

- 60 cm x 90 cm
- 90 cm x 150 cm
- 120 cm x 180 cm
- 135 cm x 200 cm

Custom lengths and custom sizes:

- Up to 135 cm wide per linear meter
- Up to 150 cm wide per linear meter
- Up to 200 cm wide per linear meter

Cleaning tip:

- Vacuum clean

018 Uni Superior™

Uni Superior™ is a mono-coloured mat printed in any colour to match your mat to any interior or to use together with the custom printed logo mats for a colour coordinated matting system.

Recommended use:

- Suitable for medium to heavy traffic conditions
- For placement inside entrances of hotels, shops, department stores, schools, universities, restaurants, supermarkets.

Specifications:

- Tufted velours cut loop pile consisting of 100% non-crush polyamide 6.6 twist yarns
- 600 grams of yarns per m²
- Backing: black vinyl (DOP free)
- Vinyl borders: 2.5 cm on each side
- Overall thickness: 8 mm
- Weight: 3 kg per m²
- Fire rating: EN 13501-1 Bfl-S1

Recommended accessories:

- 083 Bevelled Nosing 2 mm

Stock sizes:

- 60 cm x 90 cm
- 90 cm x 150 cm
- 120 cm x 180 cm
- 135 cm x 200 cm

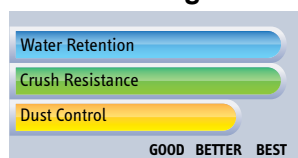
Custom lengths and custom sizes:

- Up to 135 cm wide per linear meter
- Up to 150 cm wide per linear meter
- Up to 200 cm wide per linear meter

Cleaning tip:

- Vacuum clean

Product Testing



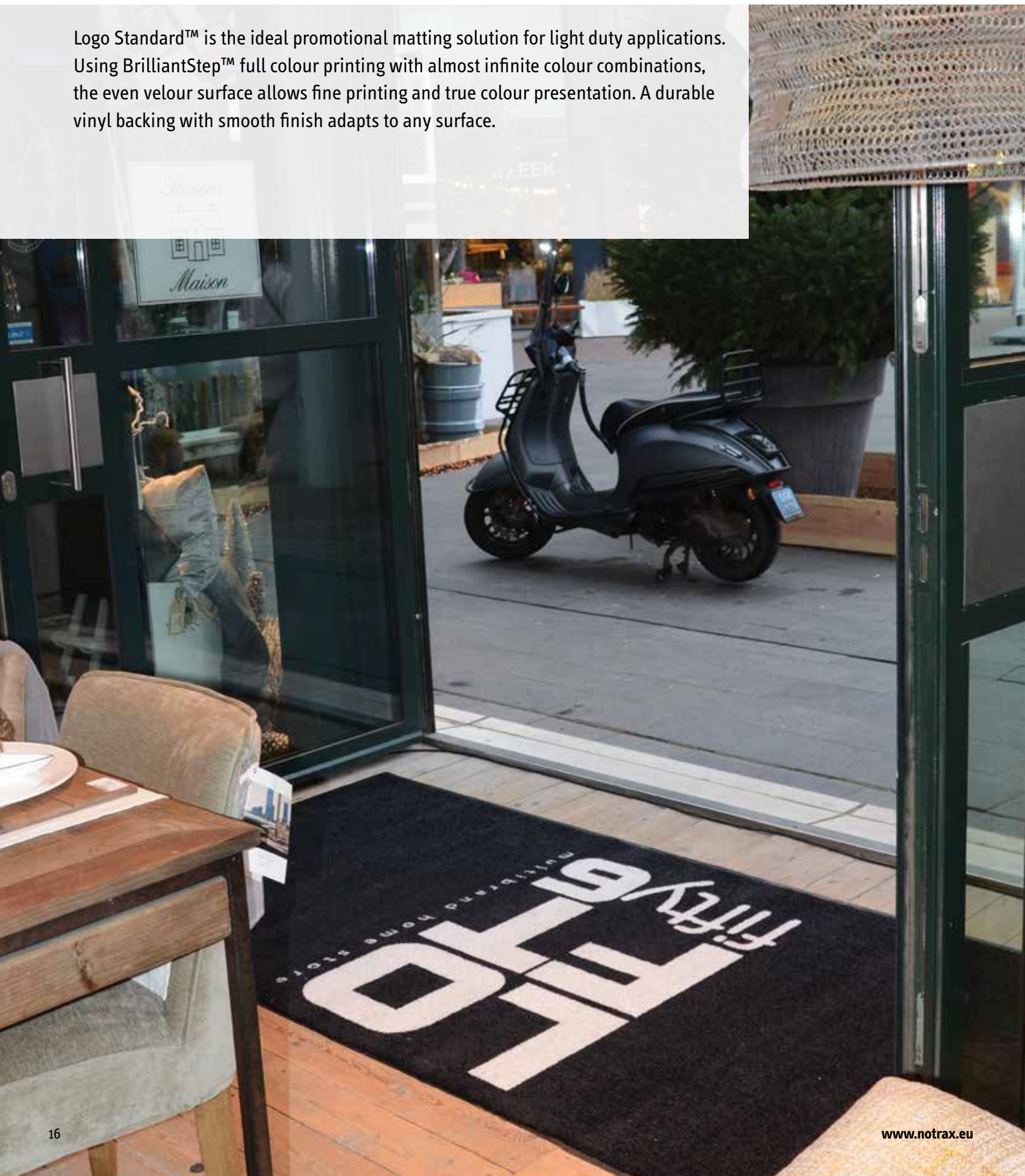
Product Testing



Indoor Absorbent Printed

193 Logo Standard™ - 015 Uni Standard™

Logo Standard™ is the ideal promotional matting solution for light duty applications. Using BrilliantStep™ full colour printing with almost infinite colour combinations, the even velour surface allows fine printing and true colour presentation. A durable vinyl backing with smooth finish adapts to any surface.





193 Logo Standard™

Logo Standard™ can be fully customized with BrilliantStep™ state-of-the-art printing technology allowing 3-dimensional effects, fine lines and colour shading, for each mat to have its truly individual image.

Artwork is supplied within 24-hours. The mat is printed 24 hours after the artwork approval is given.

Recommended use:

- Suitable for light traffic conditions
- For placement inside entrances of offices, shops, restaurants, grocery shops, bakeries, specialty stores

Specifications:

- Tufted velours cut loop pile consisting of 100% non-crush polyamide 6.0 high twist yarns
- 405 grams of yarns per m²
- Backing: black vinyl (DOP free)
- Vinyl borders: 2.5 cm on each side
- Overall thickness: 6 mm
- Weight: 2.7 kg per m²

Recommended accessories:

- 083 Bevelled Nosing 2 mm

Stock sizes:

- 60 cm x 90 cm
- 90 cm x 120 cm
- 90 cm x 150 cm
- 90 cm x 300 cm
- 120 cm x 180 cm

Custom lengths and custom sizes:

- Up to 90 cm wide per linear meter
- Up to 120 cm wide per linear meter

Cleaning tip:

- Vacuum clean

015 Uni Standard™

Uni Standard™ is a mono-coloured mat printed in any colour to match your mat to any interior scheme or to use together with the custom printed logo mats for a colour coordinated matting system.

Recommended use:

- Suitable for light traffic conditions
- For placement inside entrances of offices, shops, restaurants, grocery shops, bakeries, specialty stores

Specifications:

- Tufted velours cut loop pile consisting of 100% non-crush polyamide 6.0 high twist yarns
- 405 grams of yarns per m²
- Backing: black vinyl (DOP free)
- Vinyl borders: 2.5 cm on each side
- Overall thickness: 6 mm
- Weight: 2.7 kg per m²

Recommended accessories:

- 083 Bevelled Nosing 2 mm

Stock sizes:

- 60 cm x 90 cm
- 90 cm x 120 cm
- 90 cm x 150 cm
- 90 cm x 300 cm
- 120 cm x 180 cm

Custom lengths and custom sizes:

- Up to 90 cm wide per linear meter
- Up to 120 cm wide per linear meter

Cleaning tip:

- Vacuum clean

Product Testing



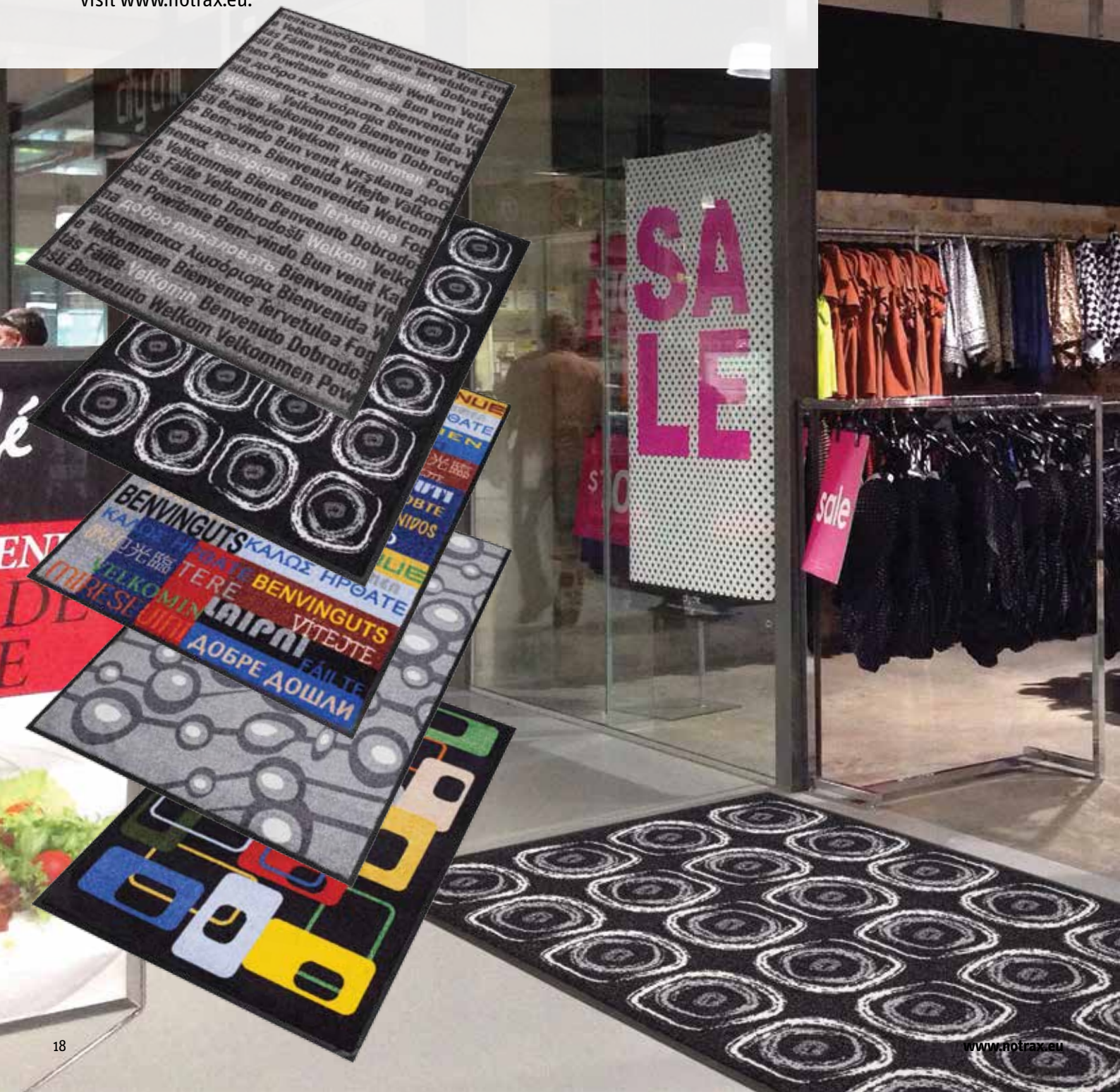
Product Testing



Indoor Absorbent Printed

Déco Design

These decorative dust control mats come in a large assortment of fashionable, attractive, funky, retro and fun designs to coordinate with any interior design or atmosphere. This high quality multi-functional dust control mat cleans and dries shoes, to prevent dirt and moisture getting tracked into facilities. Superior colour-fastness is ensured in accordance with DIN 54006. For more designs, visit www.notrax.eu.





170 Déco Design™ Washable

Tufted Frieze cut loop pile consisting of 700 grams of yarns per m² of 100% non-crush polyamide 6.6 high twist yarns. Washable up to 50°C. Nitrile rubber backing with cleated pattern to minimize movement on all surfaces and to keep the mat elevated on hard floors to allow drying underneath.

Stock sizes:

- 60 cm x 85 cm
- 85 cm x 115 cm
- 85 cm x 150 cm
- 115 cm x 180 cm

Product Testing



179 Déco Design™ Imperial

Tufted Frieze cut loop pile consisting of 700 grams of yarns per m² of 100% non-crush polyamide 6.6 high twist yarns with vinyl backing with smooth finish that adapts to any surface.

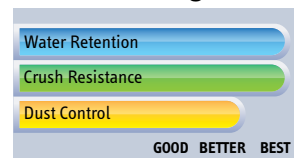
Stock sizes:

- 60 cm x 90 cm
- 90 cm x 120 cm
- 90 cm x 150 cm
- 120 cm x 180 cm
- 120 cm x 180 cm

Custom lengths and custom sizes:

- Up to 135 cm wide per linear meter
- Up to 150 cm wide per linear meter
- Up to 200 cm wide per linear meter

Product Testing



178 Déco Design™ Superior

Tufted Velour cut loop pile consisting of 600 grams of yarns per m² of 100% non-crush polyamide 6.6 twist yarns with vinyl backing with smooth finish that adapts to any surface.

Stock sizes:

- 60 cm x 90 cm
- 90 cm x 150 cm
- 120 cm x 180 cm
- 135 cm x 200 cm

Custom lengths and custom sizes:

- Up to 135 cm wide per linear meter
- Up to 150 cm wide per linear meter
- Up to 200 cm wide per linear meter

Product Testing



175 Déco Design™ Standard

Tufted Velour cut loop pile consisting of 405 grams of yarns per m² of 100% non-crush polyamide 6.0 high twist yarns with vinyl backing with smooth finish that adapts to any surface.

Stock sizes:

- 60 cm x 90 cm
- 90 cm x 120 cm
- 90 cm x 150 cm
- 90 cm x 300 cm
- 120 cm x 180 cm

Custom lengths and custom sizes:

- Up to 90 cm wide per linear meter
- Up to 120 cm wide per linear meter

Product Testing



Design considerations for logo mat printing

Achieving high definition logo printing

Resolution

Artwork should be created at a resolution of 76.2 dpi in the dimensions of the print area of the selected mat.

Although high resolution offers the possibility to print sharper lines and text, the surface of the mat determines the ultimate level of definition that you can achieve. The surface ranges from a smooth velour, open velour or frieze finishing of tufted yarns.

Colour mode / colour profile

The design in working spaces must be assigned to Adobe RGB (1998). If the design is in CMYK, LAB or greyscale, it must be converted to Adobe RGB (1998). Consider when saving, that Adobe RGB (1998) profile is embedded.

Logo printing using vector graphics

Vector data can be easily scaled infinitely. This means that you can make a vector graphic as small or large as you like and they will never lose any quality. For this reason logos are often stored in a vector format as they can then be scaled to any size to be printed on larger mat sizes without losing any quality.

Accepted vector file formats:

- EPS - Adobe's EPS format (Encapsulated PostScript) is perhaps the most common vector image format. It is the standard interchange format in the print industry.
- AI - The native format of Adobe Illustrator is the AI format (Adobe Illustrator Artwork). To avoid losing details all font lines and shapes must be converted to outlines.
- PDF - Adobe's PDF format (Portable Document Format) is very widely used as a general purpose platform-independent document format.

Photo printing using raster graphics

Photographs are raster graphics that use pixels. The amount of pixels is a reference to the amount of dots that make up the image. The more dots there are the higher quality your image will be as the dots are smaller. Vector files cannot easily be used to store these extremely complex images since the colour information is paramount and may vary on a pixel-by-pixel basis. The quality and detail of raster graphics is extremely high.

Enlargement is one of the most common issues with raster graphics as when they're enlarged, they lose quality and become 'pixelated'. The more dots/pixels there are, the more an image can be enlarged, but every image can only be enlarged by so much.

Not recommended:

- PNG - (Portable Network Graphics) is a web-based file that does not lose quality when compressed and is best used for the web.

Accepted raster file formats:

- JPEG/JPG - One of the most widely used image formats is the JPEG format (Joint Photographers' Expert Group). This format has smaller file sizes but does not store a perfect copy of the image. A high resolution of 300 dpi or the exact dimensions of the mat is imperative to print well on a large mat. We do not recommend using JPEG files for rasterized vector art, as the compression artifacts substantially degrade the quality of the image near the edges.
- BMP - There are actually several BMP formats (BitMaP). Windows and Macintosh have their own formats, both of which are called BMP. A high resolution is imperative to print well on a large mat.
- TIFF/TIF - This format (Tagged Image File Format) is used to store raw bitmap data. A high resolution is imperative to print well on a large mat.

Not recommended:

- PNG - (Portable Network Graphics) is a web-based file that does not lose quality when compressed are best used for the web.

Converting to a print ready file

When converting a vector file to a TIFF file or PCX file, please uncheck the "anti-alias" box. Anti-alias "creates" similar coloured pixels to make the colour transition smoother in a photo; however, this will not make a clear print.

Design Considerations

Logo design

Designs or logos that use solid colours will print very well on a mat.

We advise to have the background in a darker colour to maintain the appearance of the mat. Lighter areas will appear dirty faster. Gradients should be used selectively, creatively, and only when they enhance the design.

Photos

Photos should be adjusted to high contrast to ensure brilliant colours on the mat. Adjust the black to (RGB 0 – 0 – 0) and whites (where possible) to off-white (RGB 236-236-236) to prevent from dirtying too quickly.

Keeping text and fine lines legible

Text and fine lines should be the minimum pixel width to keep text and images legible. Many small shapes and fine lines should be avoided as they could disappear or print very broken and rough on smaller mat sizes. This is also applicable for the white spaces, or negative spaces between shapes or they may fill in causing a loss in the definition.

Bleeds, borders and overprint

Make sure the design is not too close to the borders due to possible overprint. The minimum space around the design (bleed) should be at least 1 cm.

We don't recommend designing a border around the design. The backing of the mat is black and extends approximately two centimetres on each side, the mat could shift slightly during printing and a designed border may not align precisely with the backing. If you require a border or would like to print all the way to the edges, we advise to take a larger size mat. It will then be cut to size and there will be no risk of an overprint and missing or uneven borders.

Choosing or matching colours



As a starting point, Notrax® has a full palette of 100 standard colours, pictured here on the right, to select from with enough choice to create any new artwork or logo design where there is no established colour scheme.

The colour swatches and RGB values shown on these pages are for visual design purposes only and do not correspond to the actual printed colours.

Each colour will print differently on each mat due to the differences in texture and surface quality. Please refer to the colour swatches provided in the approval form sent to you for a true representation of your chosen colours on your chosen matting product.

PMS colour matching

For designs where a corporate identity has been established and needs to be followed, the accuracy of colour is critical in design. We try our best to meet our customers colour expectations, but artwork designed on an RGB computer screen, may look different than what is printed. What you see on your monitor is not what will appear on a printed mat, our designers use a standardized colour matching system, such as the Pantone Matching System. Pantone offers chip books to see how colours look on coated, uncoated, and matte paper. Due to the surface of the logo mat, the closest match of the Pantone colours is the Uncoated (U) colour line.

To ensure the best colour representation on the selected mat, our design team will select the closest match in ideal lighting circumstances. Some spot colours lend themselves perfectly to being reproduced using the extended process colours, whereas others can cause slight problems in that the match is not perfect. If a colour is out of the gamut of the colour range, the closest match or substitution will occur and a photo will be sent of the nearest colour match for approval.

Choosing standard sizes or custom sizes

Logo matting is manufactured as standard size mats with vinyl borders on all sides or on rolls with vinyl borders along the length of the roll.

Special sizes are available in linear lengths and custom sizes up to a maximum of the width of the roll. For special sizes, the Notrax® production team tailor ensures each mat will be printed to order and cut to the exact dimensions of the client.

190 Logo Washable™



Mat Surface: Frieze

Formats: AI, EPS, PDF, TIFF

Art. nr.: 190S0046WH

Mat: 115 cm x 180 cm
Print area: 115 cm x 180 cm

Art. nr.: 190S0035WH

Mat: 85 cm x 150 cm
Print area: 84 cm x 150 cm

Art. nr.: 190S0034WH

Mat: 85 cm x 115 cm
Print area: 84,5 cm x 113 cm

Art. nr.: 190S0023WH

Mat: 60 cm x 85 cm
Print area: 59 cm x 84 cm

199 Logo Imperial™



Mat Surface: Frieze

Formats: AI, EPS, PDF, TIFF

Art. nr.: 199C0078WH

Mat: 200 cm per linear meter
Print area: 198 cm x linm

Art. nr.: 199C0060WH

Mat: 150 cm per linear meter
Print area: 150 cm x linm

Art. nr.: 199C0051WH

Mat: 135 cm per linear meter
Print area: 134 cm x linm

Art. nr.: 199S0048WH

Mat: 120 cm x 240 cm
Print area: 118 cm x 238 cm

Art. nr.: 199S0046WH

Mat: 120 cm x 180 cm
Print area: 118 cm x 178 cm

Art. nr.: 199S0035WH

Mat: 90 cm x 150 cm
Print area: 88,5 cm x 147 cm

Art. nr.: 199S0034WH

Mat: 90 cm x 120 cm
Print area: 88 cm x 117 cm

Art. nr.: 199S0023WH

Mat: 60 cm x 90 cm
Print area: 58,5 cm x 88 cm

198 Logo Superior™



Mat Surface: Velour

Formats: AI, EPS, PDF, TIFF

Art. nr.: 198C0078WH

Mat: 200 cm per linear meter
Print area: 198 cm x linm

Art. nr.: 198C0060WH

Mat: 150 cm per linear meter
Print area: 150 cm x linm

Art. nr.: 198C0051WH

Mat: 135 cm per linear meter
Print area: 134 cm x linm

Art. nr.: 198S0057WH

Mat: 135 cm x 200 cm
Print area: 134,5 cm x 198 cm

Art. nr.: 198S0046WH

Mat: 120 cm x 180 cm
Print area: 118 cm x 178 cm

Art. nr.: 198S0035WH

Mat: 90 cm x 150 cm
Print area: 88,5 cm x 147 cm

Art. nr.: 198S0023WH

Mat: 60 cm x 90 cm
Print area: 58,5 cm x 88 cm

193 Logo Standard™



Mat Surface: Velour

Formats: AI, EPS, PDF, TIFF

Art. nr.: 193C0048WH

Mat: 120 cm per linear meter
Print area: 118 cm x linm

Art. nr.: 193C0036WH

Mat: 90 cm per linear meter
Print area: 88 cm x cm

Art. nr.: 193S0046WH

Mat: 120 cm x 180 cm
Print area: 118 cm x 178 cm

Art. nr.: 193S0310WH

Mat: 90 cm x 300 cm
Print area: 88 cm x 298 cm

Art. nr.: 193S0035WH

Mat: 90 cm x 150 cm
Print area: 88 cm x 147 cm

Art. nr.: 193S0034WH

Mat: 90 cm x 120 cm
Print area: 88 cm x 117 cm

Art. nr.: 193S0023WH

Mat: 60 cm x 90 cm
Print area: 58,5 cm x 86,5 cm

Submitting print ready artwork

To submit a print-ready file for the custom printed mats please follow the steps below to ensure the design file conforms to the requirements. In the event that any corrections or changes need to be made, the design cost will apply.

- Artwork should be created at a resolution of 76.2 dpi.
- Make sure that the Adobe RGB (1998) profile is embedded.
- Accepted vector file formats: EPS, AI, PDF. A TIFF file is preferred.

- We advise to select colours from our 100 colour palette.
- Text and fine lines should be the minimum pixel width to keep text and images legible. We advise to have a minimum pixel width of 10. (1 pixel is enough when using a black colour).

Colour Palette

This is a visual representation of the 199 Logo Imperial™. Each colour will print differently on each mat due to the differences in texture and surface quality. For exact colours, please refer to a colour swatch.

| | | | | |
|---------------------------------------------------------------------------------------------------------------------------|--------------------------------------------------------------------------------------------------------------------------|-------------------------------------------------------------------------------------------------------------------------|--------------------------------------------------------------------------------------------------------------------------|---------------------------------------------------------------------------------------------------------------------------|
|  R 193 G 166 B 127 727 U |  R 210 G 162 B 115 720 U |  R 202 G 145 B 108 473 U |  R 185 G 130 B 95 471 U |  R 172 G 111 B 66 131 U |
|  R 238 G 171 B 136 488 U |  R 255 G 160 B 122 487 U |  R 194 G 144 B 127 693 U |  R 212 G 143 B 115 162 U |  R 211 G 129 B 93 486 U |
|  R 239 G 200 B 103 461 U |  R 299 G 191 B 99 460 U |  R 211 G 175 B 91 459 U |  R 206 G 172 B 87 458 U |  R 181 G 151 B 78 457 U |
|  R 255 G 230 B 82 100 U |  R 255 G 233 B 22 Yellow U |  R 255 G 221 B 53 106 U |  R 255 G 209 B 0 107 U |  R 255 G 199 B 0 109 U |
|  R 255 G 192 B 63 127 U |  R 240 G 196 B 49 128 U |  R 245 G 196 B 45 115 U |  R 234 G 181 B 47 116 U |  R 219 G 165 B 31 124 U |
|  R 255 G 159 B 55 148 U |  R 255 G 112 B 55 157 U |  R 215 G 112 B 48 158 U |  R 204 G 93 B 0 1375 U |  R 204 G 68 B 0 1505 U |
|  R 225 G 150 B 0 141 U |  R 217 G 90 B 0 151 U |  R 197 G 97 B 3 138 U |  R 173 G 75 B 7 145 U |  R 168 G 70 B 4 152 U |
|  R 255 G 34 B 34 1645 U |  R 186 G 20 B 27 1795 U |  R 186 G 18 B 18 7417 U |  R 173 G 35 B 46 485 U |  R 128 G 0 B 11 7418 U |
|  R 245 G 109 B 158 203 U |  R 255 G 90 B 106 204 U |  R 203 G 79 B 83 205 U |  R 189 G 79 B 92 1925 U |  R 188 G 68 B 80 1935 U |
|  R 182 G 117 B 138 680 U |  R 249 G 164 B 216 210 U |  R 255 G 0 B 175 211 U |  R 193 G 45 B 110 213 U |  R 164 G 6 B 77 214 U |
|  R 104 G 23 B 113 2425 U |  R 120 G 17 B 60 221 U |  R 120 G 40 B 60 7420 U |  R 91 G 36 B 52 7419 U |  R 76 G 12 B 42 7435 U |
|  R 138 G 101 B 196 2645 U |  R 118 G 91 B 167 2587 U |  R 81 G 25 B 85 255 U |  R 44 G 7 B 61 2617 U |  R 51 G 9 B 94 2607 U |
|  R 137 G 128 B 212 2715 U |  R 100 G 93 B 155 272 U |  R 87 G 63 B 167 273 U |  R 64 G 40 B 152 2685 U |  R 52 G 44 B 86 275 U |
|  R 118 G 157 B 236 2717 U |  R 82 G 104 B 194 2727 U |  R 0 G 0 B 179 2728 U |  R 10 G 10 B 110 293 U |  R 39 G 39 B 85 541 U |
|  R 70 G 86 B 140 284 U |  R 60 G 86 B 156 285 U |  R 49 G 77 B 137 300 U |  R 14 G 28 B 72 2955 U |  R 1 G 16 B 57 2965 U |
|  R 6 G 255 B 248 317 U |  R 0 G 175 B 175 311 U |  R 0 G 131 B 138 312 U |  R 0 G 75 B 112 314 U |  R 16 G 50 B 79 315 U |
|  R 195 G 225 B 45 388 U |  R 115 G 173 B 35 381 U |  R 0 G 141 B 58 376 U |  R 3 G 99 B 3 369 U |  R 28 G 53 B 0 371 U |
|  R 69 G 196 B 87 358 U |  R 24 G 140 B 87 360 U |  R 43 G 81 B 55 361 U |  R 33 G 81 B 55 356 U |  R 3 G 46 B 3 349 U |
|  R 150 G 100 B 0 7405 U |  R 153 G 87 B 8 146 U |  R 80 G 41 B 10 7414 U |  R 64 G 30 B 0 174 U |  R 48 G 23 B 5 175 U |
|  R 236 G 236 B 236 7541 U |  R 150 G 152 B 144 428 U |  R 64 G 64 B 64 431 U |  R 50 G 50 B 50 433 U |  R 0 G 0 B 0 Black U |

Notrax® has a full selection of indoor, outdoor and logo mats for professional use. Indoor matting is available in a range of zones, materials and colours to create a total matting solution for clean and safe entrances.



Justrite Safety Group



Justrite
Safety Group

www.justrite.com



Handelsvertretung Uwe Rudnick
Siebenbergstr. 18 | D-33039 Nieheim
Tel.: 05274 / 876 4 Fax: 05274 / 958 87
info@rudhandel.de