

Storage & Handling for Hazardous Materials

Essential





Approval and Compliance Key

| | |
|---------------|---------------------------------------------------------------------------------------------------------------------------------------|
| FM | Tested and approved by FM Approvals |
| UL/ULC | Underwriters Laboratories listed in the U.S. and Canada |
| TÜV | TÜV Technical Inspection Association certified |
| GS | Geprüfte Sicherheit – safety tested and GS certified by MPA Dresden |
| CE | Conformité Européenne – European conformity mark that is the manufacturer's declaration that a product meets applicable EC directives |
| N | Complies with National Fire Protection Association (NFPA) Flammable and Combustible Liquids Code 30 |
| O | Complies with Occupational Safety and Health Administration (OSHA) Regulations |
| I | Complies with the International Fire Code (IFC) |
| A | Complies with NFPA 1 Fire Code - 2012 Edition |
| A9 | Complies with NFPA 1 Fire Code - 2009 Edition |
| H | Complies with NFPA 400 Hazardous Material Code |
| EN | Complies with European standards EN 14470-1 and EN 14727 |
| C | Compressed Gas Association (CGA) P1 Standard for Safe Handling of Compressed Gases in Containers |
| G | Complies with NFPA 55 Compressed Gases and Cryogenic Fluids Code |
| U | U.S. Geological Survey High Hazards Zone Requirements |
| E | Complies with Environmental Protection Agency (EPA) Regulations |
| S | Supports EPA Spill Prevention, Control and Countermeasures Rule (SPCC) |
| V | Validated by the EPA Environmental Technology Verification Program |

Contents



| | |
|----------------------------------------------------------|-----------|
| Safety & Storage Cabinets | 7 |
| Classic Sure-Grip® EX Safety Cabinets | 11 |
| EN Safety & Storage Cabinets | 19 |
| EN Lithium Battery Cabinets | 21 |
| Safety & Storage Cabinets for Drums | 23 |
| Classic Sure-Grip® EX Safety Cabinets for Combustibles | 25 |
| Document Storage Boxes | 25 |
| Classic Sure-Grip® EX Safety Cabinets for Corrosives | 27 |
| Safety Cabinets for Hazardous Materials | 28 |
| ChemCor® Lined Safety Cabinets for Hazardous Materials | 29 |
| Polyethylene Cabinet for Corrosive Chemicals | 31 |
| Wood Laminate Acid Cabinets | 32 |
| Solid Polyethylene Acid Cabinets | 32 |
| Safety Cabinet Accessories | 33 |
| Safety Cans & Containers | 36 |
| Type I Safety Cans | 39 |
| Type II AccuFlow™ Safety Cans | 40 |
| Safety Dispensing Cans | 41 |
| Type I Poly Safety Cans | 42 |
| Self-Closing Containers for Non-flammable Corrosives | 42 |
| Liquid Disposal Safety Cans | 43 |
| Squeeze Bottles and Dispenser Bottles | 43 |
| HPLC Safety Disposal Cans | 44 |
| Oily Waste Cans | 47 |
| Biohazardous Waste Cans | 49 |
| Drain Cans | 51 |
| Safety Plunger Cans & Bench Cans | 52 |
| Safety Cleaning Tanks & Rinse Tanks | 53 |
| Safety Drum Covers | 54 |
| Cease-Fire® Waste Receptacles | 54 |
| Smoking Receptacles | 56 |
| Original Smoker's Cease Fire® Cigarette-Butt Receptacles | 57 |
| Elite™ Smoker's Cease Fire® Cigarette-Butt Receptacles | 59 |
| Drum Funnels & Equipment | 60 |
| Safety Drum Funnels | 61 |
| Safety Drum Vents & Faucets | 62 |
| Drum Accessories | 63 |
| Spill Control & Environmental | 64 |
| Rigid-Lock QuickBerm® XT | 68 |
| Rigid-Lock Quickberm® | 69 |
| Rigid-Lock Quickberm® Lite | 70 |
| Decon QuickBerm® | 71 |
| Washdown QuickBerm® | 71 |
| Quick Berm Ground Protection Accessories | 72 |
| Pop-Up Pools | 73 |
| Maintenance Spill Berms | 73 |
| Make-a-Berm | 75 |
| Ceiling Leak Diverters | 76 |
| Waterproof Tarps | 76 |
| Water-Filled Boom Diverters | 77 |
| Water-Filled Drain Covers | 77 |
| Drip Pads | 77 |
| Spill Trays | 78 |
| EcoPolyBlend™ Accumulation Centres, Pallets and Ramps | 79 |
| EcoPolyBlend™ Drum Management and Collection | 81 |
| EcoPolyBlend™ IBC Pallet Shed & DrumSheds™ | 83 |
| Spill Kits | 85 |
| Absorbents | 87 |
| Aerosolv® Aerosol Can Recycling System | 88 |

Justrite is a portfolio company of Justrite Safety Group.

For over a century, Justrite Safety Group has helped protect where the world works. Our mission is to identify workplace vulnerabilities and guide customers in creating an ecosystem of safety—so your team can work with confidence.

Confidence



Start with the EssentialSM



A Growing Justrite Family

In recent years we have grown, expanding Justrite Safety Group through the acquisition of other strong, valuable companies. Because of these exciting changes, we want to share our story with you—one of an unrivalled safety portfolio, expertise in environmental protection, a global network of brands, and a steadfast dedication to our customers' safety.

Start with the EssentialSM

The essence of our company is captured in a new tagline: Start with the EssentialSM. At Justrite, everything starts with safety. Protecting people, property and the planet is our first and greatest responsibility. We provide the essential safety products you need to protect your workers and workplace.

Our company logo has recently evolved. The new logo honours our heritage in fire safety, while reflecting our expertise in containment and environmental protection.



Justrite Safety Group offers industrial safety solutions and expert advice from our portfolio companies around the world.

We cover every facet of the industrial safety landscape—from the storage, containment and clean-up of hazardous materials to motion safety and emergency showers.

Whatever your needs, we can help you build the foundation of a safe, productive workplace.





Essential Industrial Safety Products

At Justrite, we partner with customers to better understand, anticipate and systematically address the safety challenges you face every day. Our extensive portfolio allows us to think holistically about your organization's vulnerabilities and deliver enterprise-wide compliance.

Justrite products and expertise help your organization to:

- Reduce fire risks
- Prevent environmental contamination
- Provide emergency relief to injured personnel
- Avoid injuries & accidents
- Avoid fines associated with non-compliance
- Stay in compliance to changing regulations
- Fulfill insurance carrier recommendations
- Improve housekeeping & operational efficiencies

Customized to Your Requirements

We offer custom spill berms, safety cabinets and HPLC safety cans. Custom colours for certain products are also available. Whatever the requirement or special need, Justrite safety experts will design and manufacture a solution that meets and exceeds your unique needs.

Free, Consultative Safety Survey

Our free, consultative STUD-E™ surveys address the inherent concerns with handling volatile hazardous liquids. STUD-E surveys are available in comprehensive formats for Storage, Transfer, Use, Disposal and Evaluation of hazardous materials.

The surveys are designed to help you meet OSHA and EPA regulations, and are backed by over a century's worth of safety experience. Put Justrite expertise to work for you to improve your overall safety program.

Providing Global Protection

Justrite safety products are available worldwide. For pricing and availability, simply contact an authorized distributor near you or visit our website at justrite.com.

For Justrite Authorized Distributors

Customer Access Network (CAN)—24/7 Support Sign-up today at www.buyjustrite.eu.

Safety & Storage Cabinets



Comprehensive

Safety & Storage Cabinets

Why do I need a safety cabinet?

One of the leading causes of industrial fires is the improper storage and handling of flammable liquids. Safety cabinets help you safely store fuels, chemicals, and solvents to reduce the risk of fire and protect your people and property.

Safety cabinets serve critical functions:

- Improve awareness—high-visibility cabinet colour and prominent labelling identify potentially hazardous chemicals
- Keep dangerous liquids safely organized and segregated—for indoor use
- Increase maximum allowable quantities of flammable and combustible liquids in control areas
- Improve efficiency by locating materials near point-of-use
- Improve security with locking mechanism
- Ensure safe evacuation time in the event of a fire
- Provide compliance with federal OSHA regulations and the National Fire Protection Association

Approvals and Compliance

Each Justrite steel safety cabinet meets at least one or more of the following regulations:

- OSHA 1910.106
- National Fire Protection Association (NFPA) Flammable Liquid Code 30
- NFPA Fire Code 1
- International Fire Code (IFC)
- National Fire Code of Canada
- NFPA Hazardous Materials Code 400
- European EN standard 14470-1 and 14727
- Most cabinets carry independent, third-party approval:
- FM Approvals
- MPA Dresden



Considerations when selecting a safety cabinet

- Federal, state, and local compliance requirements
- Size and type of container being stored
- Capacity needed
- Type of chemical being stored
- Security and safety features such as U-Loc™ padlockable handle, SpillSlope® shelves, Haz-Alert™ warning labels, all welded construction



Stainless steel, 3-point bullet self-latching system provides fail-safe, positive door closure with increased heat resistance.

Sure-Grip® EX safety storage cabinets offer top performance for indoor flammable liquid storage and protection.

Fusible links hold doors wide open and melt at 74°C for automatic closure (on self-closing models).

Sturdy 18-gauge (1-mm) double wall steel construction with 38-mm of insulating air space.

Easy-close, self-latching doors; U-Loc™ handle (shown below) does not require manual rotation to engage mandatory three-point latch.

Fully welded, not riveted, construction holds squareness for longer life and offers greater protection in a fire since air gaps are reduced.

Continuous piano hinge provides smooth closure.

Durable and chemical-resistant, lead-free powder-coat paint finish, inside and out, retains high gloss look and minimizes the effects of corrosion and humidity.

Dual vents with built-in flash arresters strategically placed at bottom and opposite top.

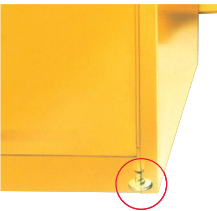


Concealed self-close mechanism provides obstruction-free access to top shelf space. Self-indexing doors guarantee they will close in sequence and ensure a tight closure from top to bottom (on self-closing models). Patented.

Patented SpillSlope® safety shelves direct spills to back and bottom of leakproof sump. Adjustable on 76-mm centres, they meet ANSI standards with a 159-kg safe allowable load.

Welded shelf hangers interlock with shelf to offer maximum stability with no flimsy brackets to lose.

51-mm leakproof containment sump holds leaks and meets EPA requirements.



Adjustable levelling feet support cabinets on uneven surfaces.



U-Loc™ handle includes double key set or can be padlocked (not included) for greater security.



SpillSlope® safety shelves direct spills to back and bottom of leakproof sump. Meets ANSI MH28.1



Welded construction holds squareness for long life; door astragal provides extra sturdiness.



Highly visible HazAlert™ reflective label provides warning—“Flammable – Keep Fire Away” in English, Spanish, and French.



Built-in grounding connector Shown with optional ground wire 08500.

Safety & Storage Cabinets



Classic Sure-Grip® EX Safety Cabinets

Protect workers, reduce fire risks, and improve productivity by storing flammable fuels and chemicals in OSHA- and NFPA-compliant safety cabinets

- Independently fire tested and approved by FM Approvals
- 18-gauge (1-mm) thick double-wall, welded steel with 38-mm of insulating air space
- Adjustable, patented SpillSlope® galvanized steel shelves direct spills to back and bottom of 51-mm leakproof sump
- 3-point stainless steel bullet latching system
- U-Loc™ handle with two keys—accepts optional padlock
- Trilingual warning with Haz-Alert™ reflective labels
- Includes dual vents with flame arresters, adjustable levelling feet, and grounding connector



| Capacity (L) | Sump (L) | H x W x D (cm) | Shelves | Manual Close | Self-Close | Extra Shelves |
|--------------|----------|----------------|---------|--------------|------------|---------------|
| 114 | 20 | 112 x 109 x 46 | 1 | 8930001 | 8930201 | 29937 |
| 170 | 20 | 165 x 109 x 46 | 2 | 8945001 | 8945201 | 29937 |
| 227 | 32 | 165 x 86 x 86 | 2 | 8960001 | 8960201 | 29944 |
| 341* | 41 | 165 x 109 x 86 | 2 | 8990001 | 8990201 | 29945 |

* OSHA 29CFR 1910.106(d)(3) states that not more than 60 gallons (227 L) of Category 1, 2, or 3 flammable liquids, nor more than 120 gallons (454 L) of Category 4 flammable liquids may be stored in a safety cabinet.



Available in four colours on request

Safety & Storage Cabinets



Countertop Sure-Grip® EX Safety Cabinets

Use on workbenches for access to often-used liquids. Compliant, compact design offers same fire protection of larger Justrite cabinets

- Door self-latches for secure closure
- Available in 1-door manual or self-closing models
- Save space by mounting on wall with optional wall hanger assembly no. 25951
- OSHA- and NFPA-compliant



| Capacity (L) | Sump (L) | H x W x D (cm) | Shelves | Manual Close | Self-Close | Extra Shelves |
|--------------|----------|----------------|---------|--------------|------------|---------------|
| 15 | 6.5 | 56 x 43 x 43 | 1 | 8904001 | 8904201 | 29935 |

Undercounter Sure-Grip® EX Safety Cabinets

Position under a counter to take advantage of storage space and keep liquids near benchtop work space

- Recessed toe kick improves ergonomics by allowing user to stand closer to work surface
- Dual back wall vents with flame arrester permit venting if needed
- Available in manual or self-close models
- Fire-resistant, leakproof design with 3-point bullet latch for failsafe closure
- SpillSlope® shelf directs spills to back and down to sump
- OSHA- and NFPA-compliant, FM-approved



| Capacity (L) | Sump (L) | H x W x D (cm) | Shelves | Manual Close | Self-Close | Extra Shelves |
|--------------|----------|----------------|---------|--------------|------------|---------------|
| 83 | 20 | 89 x 89 x 56 | 1 | 8923001 | 8923201 | 29939 |

Safety & Storage Cabinets



Slimline Sure-Grip® EX Safety Cabinets

Safely store flammables when floor space is tight or use to expand storage alongside existing cabinets

- Fire tested and FM-approved; complies with OSHA and NFPA
- 18-gauge (1-mm) thick double-wall, welded steel with 38-mm of insulating air space
- 3-point stainless steel bullet latching system
- Available in 1-door manual or self-closing models
- U-Loc™ handle with two keys—accepts optional padlock
- Three adjustable, patented SpillSlope® galvanized steel shelves direct spills to 51-mm leakproof sump
- Includes dual vents with flame arresters, adjustable levelling feet, grounding connector



8922001

| Capacity (L) | Sump (L) | H x W x D (cm) | Shelves | Manual Close | Self-Close | Extra Shelves |
|--------------|----------|----------------|---------|--------------|------------|---------------|
| 83 | 10 | 165 x 59 x 46 | 3 | 8922001 | 8922201 | 29936 |
| 204 | 20 | 165 x 59 x 86 | 3 | | 8954201 | 29941 |

Safety & Storage Cabinets

Compac Sure-Grip® EX Safety Cabinets

- FM-approved, complies with OSHA and NFPA
- Fire-resistant design includes double-walled steel with 38-mm of insulating air space and 3-point stainless steel bullet latch for positive, failsafe door closure
- Adjustable SpillSlope® safety shelf directs spills to leakproof 51-mm sump
- Dual vents with flame arresters, levelling feet, and grounding connector
- 45-L is 0.9 m high and fits under most workbenches



8912001

| Capacity (L) | Sump (L) | H x W x D (cm) | Shelves | Manual Close | Self-Close | Extra Shelves |
|--------------|----------|----------------|---------|--------------|------------|---------------|
| 45 | 10 | 89 x 59 x 46 | 1 | 8912001 | 8912201 | 29936 |
| 57 | 10 | 112 x 59 x 46 | 1 | 8915001 | 8915201 | 29936 |

Mini Safety Cabinet

- Small footprint cabinet safely stores flammables within close reach—relocates easily
- Three bungee cords keep contents in place when transporting around shop floor
- Single manual-close door
- Adjustable shelf maximizes cabinet space and directs spills to back and down to 2-liter sump
- Complies with OSHA and NFPA



| Capacity (L) | Sump (L) | H x W x D (cm) | Shelves | Manual Close | Self-Close | Extra Shelves |
|--------------|----------|----------------|---------|--------------|------------|---------------|
| Aerosols | 2.2 | 56 x 43 x 20 | 1 | 8902001 | - | - |

Piggyback Sure-Grip® EX Safety Cabinets

Low-height design allows you to store flammables on bench tops or on top of 114- and 170-L cabinets

- Expand storage and safely segregate liquids
- Complies with OSHA and NFPA, FM-approved
- All welded, double-walled 18-gauge (1-mm) steel with 38-mm of insulating air space
- Failsafe, 3-point stainless steel bullet latching system
- Available in 2-door manual or self-closing models
- U-Loc™ handle with two keys—accepts optional padlock
- Includes dual vents with flame arresters, adjustable levelling feet, grounding connector



8917001

| Capacity (L) | Sump (L) | H x W x D (cm) | Shelves | Manual Close | Self-Close | Extra Shelves |
|--------------|----------|----------------|---------|--------------|------------|---------------|
| 45 | 20 | 46 x 109 x 46 | 0 | 8913001 | 8913201 | - |
| 64 | 20 | 61 x 109 x 46 | 1 | 8917001 | 8917201 | 29937 |

Wall-Mount Sure-Grip® EX Safety Cabinets

Make the most of usable storage space—hang cabinet above workbench for easy access to work solvents

- Fully compliant, fire-resistant design like larger Justrite safety cabinets
- Eye-level positioning allows easy access to frequently used liquids
- 2-door manual close
- Comes complete with mounting hardware



| Capacity (L) | Sump (L) | H x W x D (cm) | Shelves | Manual Close | Self-Close | Extra Shelves |
|--------------|----------|----------------|---------|--------------|------------|---------------|
| 64 | 20 | 61 x 101 x 46 | 1 | 8917008* | - | - |
| 76 | 17 | 111 x 109 x 31 | 3 | 8934001 | - | 29938 |

*Not FM approved.

Safety & Storage Cabinets



EN Safety Storage Cabinets 90 Minutes

Constructed using 1 - 1.5mm steel and rock-wool fibre high-density and calcium sulphate panels, the cabinet body has a rugged acid-resistant epoxy resin coated exterior that provides excellent corrosion resistance.

In case of a fire, the thermo-expanding isolation swells in heat to ensure a hermetic seal according to standard EN14470-1.

The cabinet doors open or close manually. In the event of a fire, the built-in fusible link system releases to allow automatic closure of doors at 50°C.

- Manufactured from 1 - 1.5mm electrogalvanized steel
- Automatic door closure when the temperature exceeds
- Acid-resistant epoxy resin finish
- Insulated with rock-wool fibre high-density and calcium sulphate panels
- Internal melamine panels resistant to chemical vapours
- Additional shelving available



| Art. Nr. | Capacity (Liter) | Description | Dimensions (mm) | Weight (kg) |
|----------|------------------|-------------------------|-----------------|-------------|
| 22608 | 100 | Single Door - 3 Shelves | 600 x 2070 | 216,0 |
| 22609 | 220 | Double Door - 3 Shelves | 1200 x 2070 | 365,0 |

Safety & Storage Cabinets



EN Lithium Battery Safety Cabinets 90 Minutes

Justrite's Lithium battery EN cabinet is equipped with the latest safety technology to ensure full protection to personnel and property against the potential hazards of storing, handling and charging of Lithium-ion batteries.

Fire tests in compliance with the most stringent international standards, such as EN 14470-1, certify that the cabinet fulfills all fire requirements to act as a safety barrier in protecting in-stored Lithium-ion batteries from overheating due to external fires for a period of at least 90 minutes, preventing the batteries from spontaneously combusting, becoming unstable, or exploding.

- Manufactured from 1 - 1.5mm electrogalvanized steel
- Automatic door closure when the temperature exceeds 50°C
- Insulated with rock-wool fibre high-density and calcium sulphate panels
- Protects stored Lithium-ion batteries from overheating due to external fires for a period of at least 90 minutes
- A wide range of accessories, including outlets and a fully-fledged safety alarm



| Art. Nr. | Capacity (Liter) | Description | Dimensions (mm) | Weight (kg) |
|----------|------------------|-----------------------------|-----------------|-------------|
| 22611 | 100 | Single Door - Cabinet Only* | 600 x 2070 | 216 |
| 22612 | 220 | Double Door - Cabinet Only* | 1200 x 2070 | 365 |

*Various configuration options available

Safety & Storage Cabinets for Drums



Vertical Drum Sure-Grip® EX Safety Cabinets

OSHA- and NFPA-compliant vertical storage for one or two 110- to 200-L drums

- 18-gauge (1-mm) double-wall, welded steel with 38-mm of insulating air space for fire resistance
- Half-depth shelf adjusts to accommodate a drum with pump or funnel, or stores spare drum accessories
- Available in manual or self-close models
- Choice of drum rollers to facilitate the movement of heavy drums or removable drum support to keep drums elevated off cabinet sump
- Independently fire tested and approved by FM Approvals



| Drum Capacity (L) | Sump (L) | H x W x D (cm) | Shelves | Manual Close | Self-Close | Extra Shelves |
|-------------------|----------|----------------|---------|--------------|------------|---------------|
| One – 200 | 31 | 165 x 86 x 86 | 1 | 8962001 | - | 29946 |
| Two – 110 | 40 | 165 x 109 x 86 | 1 | 8990601** | 8990701** | - |

Double-Duty Vertical Drum Sure-Grip® EX Safety Cabinets

- Two separate compartments fit one vertical 200- or 110-L drum and up to twelve 19-L safety cans
- Fully compliant, fire resistant design with three-point, self-latching doors
- Drum area features drum rollers in the sump and one **22974** half-depth SpillSlope® shelf
- Safety can area includes two full-size, adjustable SpillSlope® shelves



| Capacity (L) | Sump (L) | H x W x D (cm) | Shelves | Manual Close | Self-Close | Extra Shelves |
|--------------|----------|----------------|---------|--------------|------------|---------------|
| 435* | 24, 31 | 165 x 150 x 86 | 2,1 | 8992601 | 8992701 | 29974 |

* OSHA 29CFR 1910.106(d)(3) states that not more than (227L of Category 1, 2, or 3 flammable liquids, nor more than 454L of Category 4 flammable liquids may be stored in a safety cabinet.
**Not FM approved

Safety & Storage Cabinets for Drums

Horizontal Drum Sure-Grip® EX Safety Cabinet

- Fire tested and approved by FM Approvals; 18-gauge (1-mm) double-wall, welded steel
- Holds a horizontally stored 200-L drum for use in gravity-flow dispensing applications
- Interior provides space for a drip-can and includes tracks to guide wheeled drum cradle into position
- Available in manual or self-close
- Powder-coat finish, inside and out
- Leakproof, 51-mm sump, dual vents with flame arresters
- Built-in grounding connector



899320 shown with optional 08800 cradle

| Drum Capacity (L) | Sump (L) | H x W x D (cm) | Shelves | Manual Close | Self-Close |
|-------------------|----------|----------------|---------|--------------|------------|
| One – 200 | 39 | 127 x 76 x 122 | - | 8993001 | 8993201 |

Accessories for Drum Cabinets

25932 Cabinet ramp:

- Easily loads a drum into a cabinet using a cart
- Ramp fits over the sill to keep securely in place
- Tread design on surface maximizes traction
- Fits all styles of Justrite drum cabinets
- Uniform distributed load limit is 340 kg
- Not for use with 08800 Wheeled drum cradle



25920 Drum Roller

- For vertical storage cabinet 8962001 (sold separately) makes it easier to manoeuvre heavy drums



08800 Wheeled drum cradle

- Positions a horizontal drum for gravity-flow dispensing



Classic Sure-Grip® EX Safety Cabinets for Combustibles

Separate and identify combustible liquids for safe storage of paints and inks

- Fully compliant, fire tested and approved by FM Approvals
- Sturdy double-wall, 18-gauge (1-mm) steel with 38-mm of insulating air space
- SpillSlope® safety shelves adjust to accept a variety of smaller paint tins and aerosol cans
- Leakproof, 51-mm sump captures spills
- 3-point stainless steel bullet latching system for fail-safe closure
- Includes dual vents with flame arresters, adjustable levelling feet, and grounding connector



8930111

| Capacity (L) | Sump (L) | H x W x D (cm) | Shelves | Self-Close | Extra Shelves |
|--------------|----------|----------------|---------|------------|---------------|
| 151 | 20 | 112 x 109 x 46 | 3 | 8930311 | 29937 |

Document Storage Boxes

Keep your important papers readily available while protecting them from moisture and dirt

- Weather-resistant polyethylene storage boxes safely store manuals and documents
- Bright red colour for visibility with smooth area that accepts ID label
- Label pack includes 2 blank labels and 2 printed labels (SDS and Instruction Manual)
- Includes heavy-duty double-sided tape for easy installation
- Large size accepts SDS binder; medium and large sized boxes accept padlock



Ideal for storage of safety data sheets, instruction sheets, receiving bills, evacuation plans, schedules, plant layouts, inventory checklists, operator manuals, emergency contacts, certificates, and medical records.

Accessories:

- Label pack (4 yellow labels: 2 blank and 2 printed - SDS and instruction manual)



23303 - Medium top opening

23304 - Medium front opening

23305 - Tube twist-on lid

23306 - Large front opening

Safety & Storage Cabinets for Hazardous Materials & Corrosives



Classic Sure-Grip® EX Safety Cabinets for Corrosives

Protect personnel and laboratories from damaging chemicals by storing corrosives in specially designed safety cabinets

- Independently fire tested and approved by FM Approvals
- Powder-coat paint finish, inside and out
- Same fire-resistant design as classic Justrite cabinets for flammable storage
- Leakproof 51-mm sump, dual vents with flame arresters, adjustable levelling feet, grounding connector
- Polyethylene trays fit on galvanized steel SpillSlope® shelves to help resist aggressive chemicals
- Polyethylene liner at bottom of sump removes for easy cleaning of drips and leaks
- 114-L models include an additional polyethylene work tray to place on top of the cabinet for a handy work surface



8945021



8904021



8912021



8917221



8922221



8923021

| Capacity (L) | Sump (L) | H x W x D (cm) | Shelves | Manual Close | Self-Close | Extra Shelves |
|-------------------------|----------|----------------|---------|--------------|------------|---------------|
| Classic Safety Cabinet: | | | | | | |
| 114 | 20 | 112 x 109 x 46 | 1 | 8930021 | 8930221 | 29937 |
| 170 | 20 | 165 x 109 x 46 | 2 | 8945021 | 8945221 | 29937 |
| 227 | 32 | 165 x 86 x 86 | 2 | 8960021 | 8960221 | 29944 |
| 341 | 41 | 165 x 109 x 86 | 2 | - | 8990221 | 29945 |

| | | | | | | |
|---------------------------|----|---------------|---|---------|---------|-------|
| Compac Safety Cabinet: | | | | | | |
| 45 | 10 | 89 x 59 x 46 | 1 | 8912021 | 8912221 | 29936 |
| Piggyback Safety Cabinet: | | | | | | |
| 45 | 20 | 46 x 109 x 46 | 0 | 8913021 | 8913221 | - |

| | | | | | | |
|--------------------------|----|---------------|---|---------|---------|-------|
| Slimline Safety Cabinet: | | | | | | |
| 83 | 10 | 165 x 59 x 46 | 3 | 8922021 | 8922221 | 29936 |

| | | | | | | |
|------------------------------|----|--------------|---|---------|---------|-------|
| Undercounter Safety Cabinet: | | | | | | |
| 83 | 20 | 89 x 89 x 56 | 1 | 8923021 | 8923221 | 29939 |

*Not FM approved.

Safety Cabinets for Hazardous Materials

Identify and safely store hazardous materials such as acids, bases, oxidizers, or toxic materials

- Independently fire tested and approved by FM Approvals
- Application specific-labels identify contents to safely store and segregate incompatible chemicals
- Double-wall, 18-gauge (1-mm) steel with 38-mm air space
- 51-mm leakproof sump with polyethylene liner included for bottom of sump
- Self-closing door(s) with a 3-point, stainless steel bullet latching system self-latch and self-close
- Fusible link on door(s) melt at 74° C for automatic closure under fire conditions
- SpillSlope® adjustable, steel shelves fitted with polyethylene trays for chemical resistance against leaks
- 114-L cabinet includes an extra polyethylene work tray that can be placed on top of cabinet for a handy work surface



8660281



8604281

8615281

8613281

8654281

8623281

| Capacity (L) | Sump (L) | H x W x D (cm) | Shelves | Self-Close | Extra Shelves |
|------------------------------|----------|----------------|---------|------------|---------------|
| Classic Safety Cabinet: | | | | | |
| 114 | 20 | 112 x 109 x 46 | 1 | 8630281 | 29937 |
| 170 | 20 | 165 x 109 x 46 | 2 | 8645281 | 29937 |
| 341 | 41 | 165 x 109 x 86 | 2 | 8690281 | 29945 |
| Countertop Safety Cabinet: | | | | | |
| 15 | 6.5 | 56 x 43 x 43 | 1 | 8604281* | 29935 |
| Compac Safety Cabinet: | | | | | |
| 57 | 10 | 112 x 59 x 46 | 1 | 8615281 | 29936 |
| Piggyback Safety Cabinet: | | | | | |
| 45 | 20 | 46 x 109 x 46 | 0 | 8613281 | - |
| Slimline Safety Cabinet: | | | | | |
| 83 | 10 | 165 x 59 x 46 | 3 | 8622281 | 29936 |
| 204 | 20 | 165 x 59 x 86 | 3 | 8654281 | 29941 |
| Undercounter Safety Cabinet: | | | | | |
| 83 | 20 | 89 x 89 x 56 | 1 | 8623281 | 29939 |

*Not FM approved.

ChemCor® Lined Safety Cabinets for Hazardous Materials

Seamless ChemCor® finish protects interior cabinet surfaces from rust and corrosion

- All the same high-performance features of Justrite's Hazardous Material Cabinets with added protection against corrosion from drips and off-gassing from harsh chemicals
- Unique flame-coated thermoplastic finish on interior doors, shelves, walls, ceiling and sump
- Non-porous, seam-free surface eliminates the need for corrosion-prone rivets or fasteners
- Resists staining and cleans up easily
- 114-L cabinet includes a polyethylene work tray for positioning on top of cabinet as a handy work surface



86302821



86042821

86122821

86132821

86222821

86232821

| Capacity (L) | Sump (L) | H x W x D (cm) | Shelves | Self-Close | Extra Shelves |
|------------------------------|----------|----------------|---------|------------|---------------|
| Classic Safety Cabinet: | | | | | |
| 114 | 20 | 112 x 109 x 46 | 1 | 86302821 | 29957 |
| 170 | 20 | 165 x 109 x 46 | 2 | 86452821 | 29957 |
| 227 | 32 | 165 x 86 x 86 | 2 | 86602821 | 29952 |
| Countertop Safety Cabinet: | | | | | |
| 15 | 6.5 | 56 x 43 x 43 | 1 | 86042821* | 29930 |
| Compac Safety Cabinet: | | | | | |
| 45 | 10 | 89 x 59 x 46 | 1 | 86122821 | 29904 |
| Piggyback Safety Cabinet: | | | | | |
| 45 | 20 | 46 x 109 x 46 | 0 | 86132821 | - |
| 64 | 20 | 61 x 109 x 46 | 1 | 86172821 | 29957 |
| Slimline Safety Cabinet: | | | | | |
| 83 | 10 | 165 x 59 x 46 | 3 | 86222821 | 29904 |
| Undercounter Safety Cabinet: | | | | | |
| 83 | 20 | 89 x 89 x 56 | 1 | 86232821 | 29929 |

*Not FM approved.

Safety & Storage Cabinets

Polyethylene and Wood



Polyethylene Cabinet for Corrosive Chemicals

Completely metal-free poly cabinet—never worry about rust again

- For strong acids such as hydrochloric, sulfuric, nitric acid; or bases such as sodium, potassium, calcium hydroxide
- Durable HDPE (high-density polyethylene) for chemical resistance
- Shelf adjusts on 76-mm increments with a 57-kg load capacity
- Removable sump cover serves as a bottom shelf, concealing the integrated, 32-L capacity leakproof sump
- Manual 2-door accepts optional padlock
- Use for stand-alone storage for access to grooved top surface or expand capacity by stacking two cabinets
- When used under a counter, recessed toe kick provides improved ergonomics
- Four pre-formed, rear vent locations provide a guide for an aftermarket vent kit (not included) if a pressurized vapour removal system is required
- Three application-specific labels included - Acid, Base and Corrosive



| 2.5 L Bottle Capacity | Sump (L) | H x W x D (cm) | Shelves | Shelf Load (kg) | Manual Close |
|-----------------------|----------|----------------|---------|-----------------|--------------|
| 36 | 32 | 90 x 91 x 64 | 1 | 57 | 24180 |

Countertop Polyethylene Cabinet for Corrosives

- Point-of-use convenience for small quantities of acids or bases
- Completely metal-free—excellent chemical resistance against damaging spills or vapours
- Includes two poly shelves; use one inside to catch leaks, store the other under cabinet and remove for use as a worktop
- Hinge door from either side—accepts optional padlock
- Three application-specific labels included - Acid, Base and Corrosive



| 4 L Bottle Capacity | Sump (L) | H x W x D (cm) | Shelves | Shelf Load (kg) | Manual Close |
|---------------------|----------|----------------|---------|-----------------|--------------|
| 2 | - | 50 x 36 x 44 | - | - | 24080 |

Wood Laminate Acid Cabinets

- Long-lasting wood construction with stainless steel handles and hinges
- Shelf adjusts on 32-mm increments
- Includes adjustable leg levellers, Haz-Alert™ reflective labels, and double key set
- **24140** Undercounter model includes a removable, easy-to-clean polyethylene work surface that is recessed 16 mm to contain leaks
- **24140** height dimension includes 19-mm top. For undercounter usage, remove top and adjust leg levelers which extend up to 19 mm



| 2.5 L Bottle Capacity | Sump (L) | H x W x D (cm) | Shelves | Manual Close | Shelves |
|-----------------------|----------|----------------|---------|--------------|---------|
| 6 | - | 47 x 61 x 41 | 0 | 24120 | - |
| 36 | - | 91 x 91 x 56 | 1 | 24140 | 24168 |
| 49 | - | 152 x 107 x 45 | 1 | 24150 | 24167 |

Solid Polyethylene Acid Cabinets

- Suitable for highly aggressive liquids—no metal parts to corrode
- Leakproof 51-mm sump
- Three-point door latch on larger units offers secure closure
- Shelf on larger units adjust on 76-mm increments
- Door accepts optional padlock
- Toe kick on **24010** 36-L undercounter model offers improved ergonomics—less leaning



| 2.5 L Bottle Capacity | Sump (L) | H x W x D (cm) | Shelves | Manual Close |
|-----------------------|----------|----------------|---------|--------------|
| 6 | - | 56 x 43 x 43 | 0 | 24004 |
| 36 | - | 91 x 91 x 55 | 1 | 24010 |
| 36 | - | 93 x 91 x 55 | 1 | 24015 |

Accessories offer organization and convenience

SpillSlope® steel shelf for hazardous material cabinets or corrosive storage cabinets

- Galvanized steel shelves hold up to 159 kg and adjust on 76-mm increments
- Polyethylene trays fit over steel shelves for added corrosion protection against leaks when storing damaging corrosive liquids
- Available options include: combination tray with poly tray, steel shelf alone, or poly tray alone



Steel Shelf Dividers

- **29985** fits all Justrite cabinets with 36 cm deep shelves
- **29990** fits all Justrite cabinets with 46 cm deep shelves
- Simply place over shelf and slide into position as desired



84000 Seismic Bracket Kit

- Provides increased stability—ideal for earthquake or hurricane prone areas
- One kit secures any safety cabinet to a wall or floor
- No holes are created so the fire protection properties of the cabinet remain intact and the cabinet maintains FM approval



Accessories offer organization and convenience

84002 Leg Riser Frame

- Provides sturdy, stable support for easy relocation of empty cabinet with forklift or pallet jack
- High leg frame makes it easy to clean underneath and keeps cabinet away from floor moisture
- Includes leg levellers and safety warning label: “Forklift Only When Empty”



84001 Rolling Cart

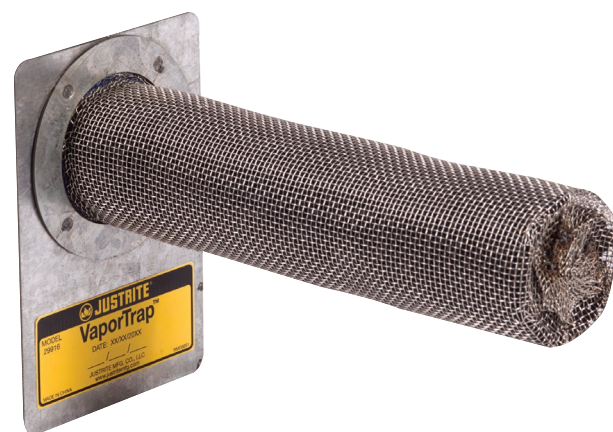
- Makes it easy to move a heavy safety cabinet—transport solvents and chemicals directly to your work area
- All welded 3-mm thick heavy-duty steel and 127-mm poly caster wheels with brakes for added safety
- Removable push handle
- Fits any cabinet 109 x 46 cm with a maximum height of 112 cm with a load capacity of 227 kg



29916 VaporTrap™ Safety Cabinet Filter

Improves your work environment by reducing employee’s inhalation exposure to VOCs

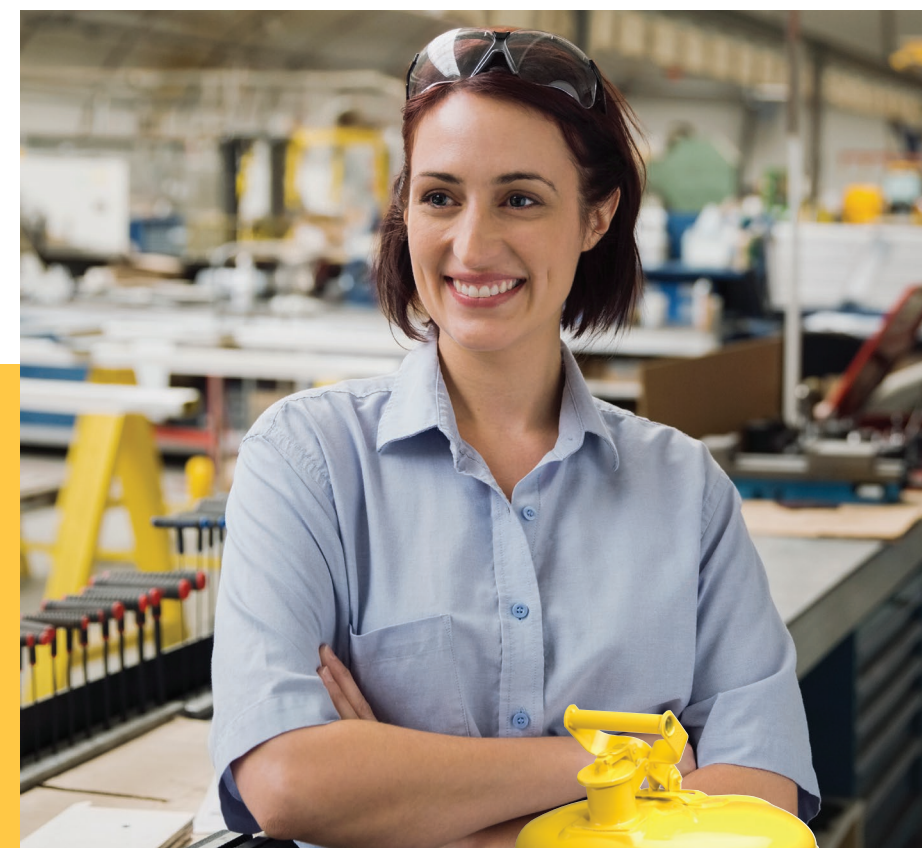
- Reduce harmful volatile organic chemical vapours inside your safety cabinet
- Activated carbon filter medium contained in a stainless steel mesh cartridge adsorbs VOC vapours
- Magnetized base offers flexible placement anywhere within the cabinet
- Date notation area on label serves as a reminder for replacement—life cycle varies based upon vapor types and concentrations
- Set of 2 filters



Note: Due to variables such as the chemical itself, its purity, or its vapor pressure, temperature, humidity, charcoal age, etc., it is difficult to estimate VOC vapor adsorption rates. The Justrite VaporTrap™ Carbon Filter is not intended to be used as a substitute for using safe closed containers as required by OSHA and the EPA. It is important to clean up spills and residues from the cabinet and containers

Safety Cans & Containers

Trusted



Safety Cans & Containers

Why do I need a safety can?

Almost every place of business has occasion to use flammable liquids such as fuels, chemicals, and solvents. Whereas these liquids are relatively commonplace, it's important to understand the dangers they may present. For example, one gallon of vaporized gasoline can explode with the same force as twenty sticks of dynamite. Safety containers protect workers by minimizing the risk of accidents and fires when handling hazardous liquids.

Safety cans serve critical functions:

- Reduce the risk of fire and explosion when pouring and storing flammable liquids
- Provide compliance with federal OSHA regulations and fire codes
- Improve efficiency with ease-of-use features which enhance pouring and filling operations

Approval and Compliance

Approved by, or meet, at least one or more of the following:

- FM Approvals
- Underwriters Laboratories
- TÜV Technical Inspection Association
- OSHA 1910.106
- National Fire Protection Association (NFPA) Code 30
- UN/D.O.T. 49 CFR parts 100 to 185
- National Fire Code of Canada
- NFPA Fire Code 1
- International Fire Code (IFC)
- California Air Resources Board (CARB) Title 13



Types of Safety Containers

- Type I and Type II steel safety cans
- Polyethylene safety cans
- Laboratory safety cans
- Quick-disconnect safety disposal cans
- Liquid disposal safety cans
- Oily waste cans
- Plunger and bench cans
- Dip, wash, and rinse tanks



Safety Cans & Containers

Comfortable, rounded handle doesn't cut into hand.

Leakproof, positive pressure relief lid automatically vents to prevent rupture or explosion. It is spring-loaded to self-close controlling vapours and spills.

Trilingual warning label.



10 Year Limited Warranty

Type II

AccuFlow™

Free swinging handle with counter-balanced design leverages the weight of the can against the opening mechanism for easy pouring and carrying.

Reinforcing ribs strengthen walls to resist denting or implosion.

Double lock seams at base and top offer four thicknesses of steel for extra "bumper guard" protection.

Type I



Exclusive, vented Type II AccuFlow™ manifold with a Safe Squeeze® trigger handle provides the fastest smoothest, most controlled pouring. Patented.



Flexible 229-mm hose on Type II AccuFlow™ offers targeted pouring into small openings.



Quick-fill port on Type II AccuFlow™ features an ergonomically designed lift lever that opens wide for easy filling.



Extra capacity in all cans accommodates oil additives for two cycle engines.



13-mm grip lip along bottom supports pouring and resists accidental punctures when placed on uneven surfaces.



Stainless steel flame arrester stops flashback ignition. 88 mm length offer safe secure insertion of gas nozzle.



Optional 2-position polypropylene funnel for Type I cans aids in pouring and folds down for compact storage and filling.



Large ID zone permits user labelling to avoid misuse, mishaps with incompatible mixtures, or to identify owner or department.

Safety Cans & Containers



Type I Safety Cans

Protect workers and reduce fire risks by transferring, storing and dispensing flammable liquids in OSHA-approved, single-spout Type I safety cans

- Self-closing, leakproof lid protects vapours from escaping and guards against spills
- Positive-pressure relief cap automatically vents can to guard against rupture or explosion
- Stainless steel flame arrestor dissipates heat to stop flashback ignition
- Guaranteed 100% leakproof construction
- Large label ID zone on swing-handle cans provides writing space to identify contents
- Swinging handles on cans 4 litres or larger to help carry heavier loads
- Tough powder-coat finish resists chemicals
- Certified by FM Approvals, UL/ULC, and TÜV
- Made in the EU



7150100Z



10001 10101Z 10301Z



7125100Z 7120100Z 7110100Z 7150100Z

Trigger Handle

| Capacity (L) | OD x H (cm) | Red | Yellow |
|--------------|-------------|---------|--------|
| 0.5 | 12 x 17 | 10001 | 10011Z |
| 1 | 21 x 21 | 10101Z | 10111Z |
| 4 | 18 x 29 | 10301Z* | |

Swinging Handle

| Capacity (L) | OD x H (cm) | Red | Yellow |
|--------------|-------------|----------|----------|
| 4 | 24 x 28 | 7110100Z | 7110200Z |
| 7.5 | 24 x 35 | 7120100Z | 7120200Z |
| 9.5 | 30 x 29 | 7125100Z | 7125200Z |
| 19 | 30 x 43 | 7150100Z | 7150200Z |

11202Y Type 1 Safety Can Funnel

- For sizes ≥ 4 litres. Two positions: folds down for filling, stays up when pouring
- Big bowl protects against splashes



*Not TÜV certified

Safety Cans & Containers

Type II AccuFlow™ Safety Cans

Go beyond protection and compliance with the added convenience of AccuFlow™ with Safe-Squeeze® trigger for safe and controlled pouring

- Vented design provides smooth, slug-free liquid flow
- Flexible 229-mm long metal hose helps control the pour into small openings
- Stainless steel flame arrester prevents flashback ignition
- Two-openings – one for targeted pouring, one with ergonomically designed lift-lever for easy filling
- Sealed lid features automatic positive-pressure relief to protect against explosion
- Large label ID zone provides writing space to identify contents, department location, or individual user name
- Tough powder-coat finish resists chemicals
- Certified by FM Approvals, UL/ULC, and TÜV; meet OSHA and NFPA requirements
- Made in the EU



7250130Z



7225130Z



7210120Z



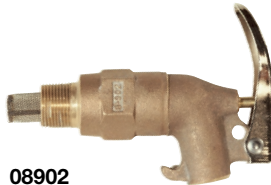
7220120Z

| Capacity (L) | Hose OD x L (cm) | OD X H (cm) | Red | Yellow |
|--------------|------------------|-------------|----------|----------|
| 4 | 1.6 x 23 | 24 x 27 | 7210120Z | 7210220Z |
| 7.5 | 1.6 x 23 | 24 x 34 | 7220120Z | 7220220Z |
| 9.5 | 2.5 x 23 | 30 x 30 | 7225130Z | 7225230Z |
| 19 | 2.5 x 23 | 30 x 45 | 7250130Z | 7250230Z |

Safety Dispensing Cans

Same benefits of our classic Type I safety cans, but also include faucets for safe dispensing of hazardous liquids into small flasks and beakers

- All styles are FM-approved
- Fill spouts feature self-closing pressure-relief caps and stainless-steel flame arresters
- Self-closing faucets provide trouble-free dispensing



08902



7150250Z

Steel Shelf Cans

- Self-close faucet is mounted 51 mm above the bottom to eliminate the need to lift the cans during dispensing

| Capacity (L) | OD x H (cm) | Red Faucet 08540 | Red Faucet 08902 | Yellow Faucet 08540 | Yellow Faucet 08902 |
|--------------|-------------|------------------|------------------|---------------------|---------------------|
| 9.5 | 30 x 30 | 7225140 | 7225150Z | 7225250Z | - |
| 19 | 30 x 40 | 7150140 | 7150150Z | 7150240Z | 7150250Z |

Poly Shelf Cans

- Polyethylene safety dispensing cans provide superb corrosion protection, and a unique current-carrying carbon insert embedded into the container allows for proper grounding
- Self-close faucet is mounted 51 mm above the bottom to eliminate the need to lift the cans during dispensing

| Capacity (L) | OD x H (cm) | Red Faucet 08504 |
|--------------|-------------|------------------|
| 19 | 30 x 43 | 14545Z |



Steel-Tilt Cans

- Top-mounted self-closing faucet
- Sturdy metal cradle for easy dispensing
- Cradle base measures 35 x 35 cm
- UL listed

| Capacity (L) | OD x H (cm) | Red Faucet 08540 | Red Faucet 08540 |
|--------------|-------------|------------------|------------------|
| 19 | 30 x 40 | 7150146 | 7150156 |



Safety Cans & Containers

Type I Poly Safety Cans

Chemical-resistant HDPE cans offer safe storage for flammable corrosives in a space-saving design

- Independently fire tested and approved by FM Approvals
- Durable one-piece body construction that resist dents, punctures, and chips to withstand abusive environments
- Patented conductive current-carrying carbon insert embedded into the rib of containers completes a ground path between the cover assembly and the flame arrester. When used with a grounding strip, this prevents the creation of a static arc during filling or pouring.
- Self-closing cap, pressure-relief mechanism and flame arrester prevent ignition sources from entering without restricting liquid flow in or out of the can
- Resistant to tough acids and heat
- Suitable for most high-purity liquids

| Capacity (L) | W x L/OD x H (cm) | Red |
|--------------|-------------------|--------|
| 2 | 12 x 19 x 24 | 14065Z |
| 4 | 12 x 19 x 32 | 14160Z |
| 9.5 | 27 x 36 | 14261 |
| 19 | 32 x 41 | 14561 |

Self-Closing Containers for Non-flammable Corrosives

Improve safety and ensure containment with translucent high-density polyethylene laboratory containers

- Spring-close cap provides a tight seal
- Flame arrester-free spout allows quick pouring of non-flammable corrosives
- Oval containers have trigger handle for one-handed pouring
- The 7.5- to 19-litre sizes have fixed position on handle

| Capacity (L) | Spout Dia (cm) | W x L/OD x H (cm) | White |
|--------------|----------------|-------------------|-------|
| 4 | 3.7 | 12 x 19 x 32 | 12161 |
| 7.5 | 9.2 | 31 x 38 | 12762 |
| 9.5 | 3.7 | 27 x 39 | 12260 |
| 19 | 9.2 | 31 x 51 | 12765 |



14561



14160Z

14065Z



12260



12762

12161

Liquid Disposal Safety Cans

HDPE disposal cans provide a solution for the containment of liquid flammable or corrosive waste

- Durable poly in safety red or translucent white to easily detect liquid level
- Current-carrying, patented carbon insert embedded in the container allows for proper grounding
- Stainless steel handle and hardware with latch-catch system hold the cap open for easy filling and pouring
- Provides superior chemical resistance and leak protection
- Broad-base design prevents accidental tip over
- Available with built-in fill gauge that pops up to warn you that the container is almost full*
- Independently fire tested and approved by FM Approvals

Accessories:

- 11406 – Replacement stainless steel flame arrester



12754



14265 with fill gauge

| Capacity (L) | OD x H (cm) | Red | White | Red with Fill Gauge* |
|--------------|-------------|--------|-------|----------------------|
| 7.5 | 31 x 38 | 14762Z | 12751 | 14265 |
| 19 | 31 x 51 | 14765Z | 12754 | |

*Not FM approved

Squeeze Bottles

- Made of polyethylene with a stainless-steel wire, squeeze bottles provide safe dispensing of flammable liquids directly on small components or sub-assemblies with minimum over-spray
- Squeezing the bottle produces a fine stream of liquid
- Stem can be shaped to dispense into hard-to-get areas
- Intended for daily use only

| Capacity (L) | OD x H (cm) | Translucent |
|--------------|-------------|-------------|
| 0.5 | 7 x 19 | 14009 |
| 1 | 9 x 23 | 14011 |



Safety Cans & Containers

HPLC Safety Disposal Cans

Quick-disconnect fittings and coalescing carbon filters keep labs and personnel safe with a compliant solution to HPLC waste collection

- Provides vapour and fire protection
- Safeguards against accidental spills
- Hands-free solvent collection suitable for either pump-fed or gravity-flow HPLC waste methods
- Translucent polyethylene container allows quick visual inspection of liquid level
- Two disconnect fittings eliminate back pressure in liquid flow disposal line and provide controlled handling of vapour
- Pouring spout equipped with stainless steel flame arrester to prevent flashback ignition
- Easy-on, easy-off quick-disconnect mechanism prevents leaks, drips or vapour release
- Automatically sealed after disconnecting
- FM-approved; meets OSHA, NFPA and EPA requirements



Coalescing carbon filter
Optional filters are for use with only round style cans

Optional manifold

Valved quick-disconnect fittings automatically close when decoupled to prevent vapor or liquid release

Translucent colour lets you check liquid level at a glance

Oval-style maximizes storage space and features one-handed pouring from narrow 36-mm spout



| Capacity (L) | W x L/OD X H (cm) | Stainless Steel Intake & Release | Polypropylene intake & release | Steel Intake PP Release |
|--------------|-------------------|----------------------------------|--------------------------------|-------------------------|
| 4 | 20 x 13 x 32 | | 12160 | |
| 7.5 | 31 x 38 | TF12752 | PP12752 | BY12752 |
| 19 | 31 x 51 | TF12755 | PP12755 | BY12755 |

Accessories

Coalescing Carbon Filters

Use with HPLC cans to minimize odour and capture 99% of liquid particulates released as gaseous vapor. Vent filter snaps conveniently into the quick-disconnect fitting. Carbon filter cartridge colour indicator beads change from purple to black when replacement is necessary. Replace the coalescing filter after three or four carbon filter cycles. Meets EPA 40 CFR 264.173.



28161 with polypropylene fitting



28162 with stainless steel fitting



28157 3-pack replacement filters

HPLC PTFE Manifold and Compression Fittings

Enables up to six waste lines (per manifold) from HPLC processes to be fed into a single intake fitting. Safety container with manifold installed is OSHA compliant and meets NFPA Code 30. Use on round containers; not for use on oval style can.



PTFE Manifold:

- 28177 PTFE manifold with stainless steel fitting
- 28178 PTFE manifold with polypropylene fitting
- 28179 PTFE manifold with stainless stacker connector



ETFE tubing compression fittings with 6 ferrules:

- 28188 – 1.6 mm – blue
- 28121 – 2 mm – yellow
- 28122 – 2.5 mm – orange
- 28123 – 3 mm – red
- 28189 – 3.2 mm – green



Spill Basin

Durable polyethylene basin keeps work area clean around HPLC cans and captures any inadvertent leakage from HPLC inflow tubes

84003 – 19 litres – 38 x 38 x 19 cm



Waste Cans & Receptacles



Oily Waste Cans

Dispose of oil-soaked rags and prevent fires caused by stray sparks or spontaneous combustion

- Lid stays closed when not in use to isolate contents from fire sources and limit available oxygen
- Round construction and elevated base allow circulation of air around can to disperse heat and reduce moisture build-up and rusting
- Durable steel construction with a powder-coat finish provides chemical resistance
- Swinging carry handle for portability
- Warning label with pictographs reduces miscommunication
- FM-approved; meets OSHA requirements; foot-operated cans meet TÜV certification requirements
- Available with SoundGard™ style in silver or red lessens noise closure for quiet-working settings
- Available as hand-operated or foot-operated models with self close cover
- Made in the EU



| Capacity (L) | OD x H (cm) | Red Foot Operated | Red Hand Operated | Yellow Foot Operated | Yellow Hand Operated | Red Foot Operated With SoundGard™ | Silver Foot Operated With SoundGard™ |
|--------------|-------------|-------------------|-------------------|----------------------|----------------------|-----------------------------------|--------------------------------------|
| 1.7 | 12 x 17 | | | | | 09410* | |
| 8 | 24 x 23 | | 09200 | | 09200Y | | |
| 20 | 30 x 40 | 09100 | 09110 | 09101 | | 09108 | 09104 |
| 34 | 35 x 46 | 09300 | 09310 | 09301 | | 09308 | 09304 |
| 52 | 41 x 51 | 09500 | | 09501 | | | 09504 |
| 80 | 47 x 60 | 09700 | 09710 | 09701 | | | 09704 |

*Hand operated

Waste Cans & Receptacles



Biohazard Waste Cans

Justrite's Biohazard Waste Containers meet OSHA 29 CFR 1910.1030 for the segregation of infectious waste. Use them to store contaminated laundry as well as other regulated waste; however, not for the storage of sharps. Sturdy steel cans feature leakproof construction with foot-operated, self-closing lid. Simple, foot pedal operation opens the cover automatically to safely dispose of biohazard waste. Upon release of the pedal, the can cover closes quickly to reduce the risk of contamination. A biohazard bag is held securely around the circumference of the can top.

- Safe, temporary collection of biological waste
- Meets OSHA 29 CFR 1910.1030 for segregation of infectious waste
- Foot-operated, self-closing lid
- Approved by FM Approvals and TUV
- Made in the EU



| Art. Nr. | Capacity (Liter) | Description | Dimensions (mm) | Weight (kg) |
|----------|------------------|-----------------------|-----------------|-------------|
| 05930 | 38,0 | Biohazard Can - White | 3540 x 464 | 5,7 |
| 05930R | 38,0 | Biohazard Can - Red | 3540 x 464 | 5,7 |

Biohazardous Waste Bags

For the safe, temporary collection of biological waste. Red colour is easily identifiable as biohazard bags. 14 microns thick, available in packs of 100.



| Art. Nr. | Capacity (Liter) | Description | Dimensions (cm) | Weight (kg) |
|----------|------------------|------------------------------------|-----------------|-------------|
| 5901 | | Biohazard Waste Bags - Pack of 100 | 83.8 x 61 | 0,9 |

Waste Cans & Receptacles



Drain Cans

Easily and safely collect used solvents from parts washing equipment with a Justrite drain can. Wide-mouth funnel catches drainage with no spill and no mess.

The removable funnel is plated steel. Built-in flame arrester keeps fire from contents. A 3/4" threaded plug allows safe disposal of waste liquids from the drain can into a permanent receptacle. Optional drain can cover fits on top of the funnel to keep out dirt.

- Safely collect waste liquids from parts washing equipment with no spills or mess
- Features a wide-mouth, 225 mm plated steel funnel that catches drainage – position under rinse tanks to collect used solvents
- Built-in flame arrester on funnel protects liquid contents from ignition sources
- 19 mm threaded plug permits disposal of waste liquids into a permanent receptacle
- Funnel is removable for easy cleaning
- Optional drain can cover for funnel top keeps dirt out
- A 3/4" threaded plug allows safe disposal of waste liquids from the drain can into a permanent receptacle



| Art. Nr. | Capacity (Liter) | Description | Dimensions (mm) | Weight (kg) |
|----------|------------------|---------------------------------------------|-----------------|-------------|
| 10906 | 19.0 | Drain Can with plated steel funnel - Yellow | 295Ø x 425 | 3,2 |
| 10905 | 19.0 | Drain Can with plated steel funnel - Red | 295Ø x 425 | 3,2 |

Waste Cans & Receptacles

Safety Plunger Cans

Moisten cleaning cloths quickly and easily—smart-pump brings more liquid to the top and requires less time between refills

- Dispense flammable liquids and solvents safely, without waste or exposure
- Perforated dasher dissipates heat
- Pump base design leaves less liquid in the bottom before requiring a refill
- Rugged 24-gauge steel cans with powder-coat finish for chemical resistance
- High-density polyethylene container option for greater corrosion resistance
- Approved by FM Approvals and TÜV
- Made in the EU

Steel cans with steel dasher

| Capacity (L) | Dasher Dia (cm) | OD x H (cm) | Red | Yellow |
|--------------|-----------------|-------------|-------|--------|
| 0.5 | 7 | 12 x 13 | 10008 | 10018 |
| 1 | 13 | 18 x 14 | 10108 | 10118 |
| 2 | 13 | 18 x 20 | 10208 | 10218 |
| 4 | 13 | 18 x 27 | 10308 | 10318 |

Polyethylene can with brass dasher

| Capacity (L) | Dasher Dia (cm) | OD x H (cm) | Red |
|--------------|-----------------|-------------|--------|
| 1 | 13 | 14 x 21 cm | 14018Z |

Safety Bench Cans

Clean small parts with a simple downward push and agitate parts in cleaning solvent

- Durable 24-gauge steel with powder-coat finish for chemical resistance
- Flash-arresting plated steel dasher plate for safety
- All bench cans are FM-approved and certified by TÜV
- Hinged cover minimizes evaporation losses
- Protected rim reduces the possibility of hand injury
- Accessories: **11171** – Parts basket for >4 litres bench cans
- Made in the EU

| Capacity (L) | Dasher Dia (cm) | OD x H (cm) | Red | Yellow |
|--------------|-----------------|-------------|-------|--------|
| 1 | 11 | 12 x 14 | 10175 | 10171 |
| 2 | 19 | 24 x 8 | 10295 | 10291 |
| 4 | 19 | 24 x 11 | 10375 | 10385 |
| 8 | 25 | 29 x 15 | 10575 | 10578 |



10208



14018Z



10375 with 11171 Parts basket

Safety Cleaning Tanks

Self-closing dip tanks provide a safe, portable solution to parts cleaning

- Clean parts where the volume of work does not warrant a larger rinse tank
- Use dip tanks for singular, larger piece parts
- Tanks and baskets constructed of sturdy, 24-gauge coated steel with powder-coat finish for chemical resistance
- Tank cover stays open for convenient access; self-closing mechanism and fusible link melts at 74° C to snap the cover shut in case of fire
- Standard steel dip tanks are FM-approved and certified by TÜV

Steel dip tanks:

| Capacity (L) | OD x H (cm) | Red | Yellow | Parts Basket |
|--------------|-------------|-------|--------|--------------|
| 4 | 24 x 14 | 27601 | 27611 | |
| 8 | 24 x 25 | 27602 | 27612 | 27901Z |
| 19 | 35 x 33 | 27605 | 27606 | |
| 30 | 40 x 36 | 27608 | 27618 | 27906Z |

Steel dip tanks with HDPE liner:

Removable, high-density polyethylene liner permits use with harsh, corrosive chemicals

| Capacity (L) | OD x H (cm) | Yellow |
|--------------|-------------|--------|
| 19 | 35 x 33 | 27616 |

Safety Rinse Tanks

Easily clean large parts with big-capacity rinse tanks—available in floor standing, benchtop and twin chamber styles

- Generously sized 30 cm deep tank to immerse parts
- All chambers feature a 19 mm drain plug for easy solvent replacement
- Features self-closing covers operated by foot treadle
- Adjustable-rate pneumatic cylinder prevents cover from slamming shut when treadle is released
- Lift-and-latch style cover includes a fusible link that melts under fire conditions to automatically close cover

Accessories:

- **27006** – Sediment screen
- **27005** – Parts basket



Steel dip tanks:

| Capacity (L) | Tank W x D x H (cm) | W x D x H (cm) | Red | Yellow |
|--------------|---------------------|----------------|-------|--------|
| 83 | 90 x 41 x 30 | 90 x 41 x 83 | 27220 | 27221 |

Waste Cans & Receptacles

Safety Drum Covers

- Converts open-top steel drums into self-closing, fire-safe waste receptacles for combustible waste
- Replaceable fusible-link assembly melts at 74° C to automatically slam shut cover if there is a fire in the drum
- Durable steel construction with powder-coat finish
- FM-approved and TÜV certified
- Self-close drum cover with fusible link for 200-litre drums with 58 cm diameter

Available in: 26750 Red and 26751 Yellow



26750

Safety Drum Covers with Vapor Control

- Turns ordinary drums into fire-safe hazardous waste collection centres
- Controls odours and VOC emissions when disposing solvent-soaked rags
- Durable steel construction with power-coat finish
- Gaskets and vents comply with NESAM/EPA
- FM-approved and TUV approved

Available in:

- 26753 Spring-loaded self-latching lid with gravity close for 200 litre drums
- 26754 Vapor-Trap™ manual latching lid with easy-access port allows for fast discard



26754

Cease-Fire® Waste Receptacles

The safe answer to waste paper and other solvent-free combustibles accumulation

- Brushed aluminium head models for easy cleaning and corrosion resistance
- Rust preventative interior coating
- Specially contoured design directs smoke and gas from any fire inside the container, back into the combustion area
- Cuts off the air supply and extinguishes flames in seconds
- FM-approved



26655G

| Capacity (L) | OD x H (cm) | Grey Drum - Aluminium Head | Aluminium Head Only |
|--------------|-------------|----------------------------|---------------------|
| 45 | 38 x 53 | 26612G | 27616 |
| 200 | 61 x 90 | 26655G | 26555 |

Smoking Receptacles

Supportive



Smoking Receptacles



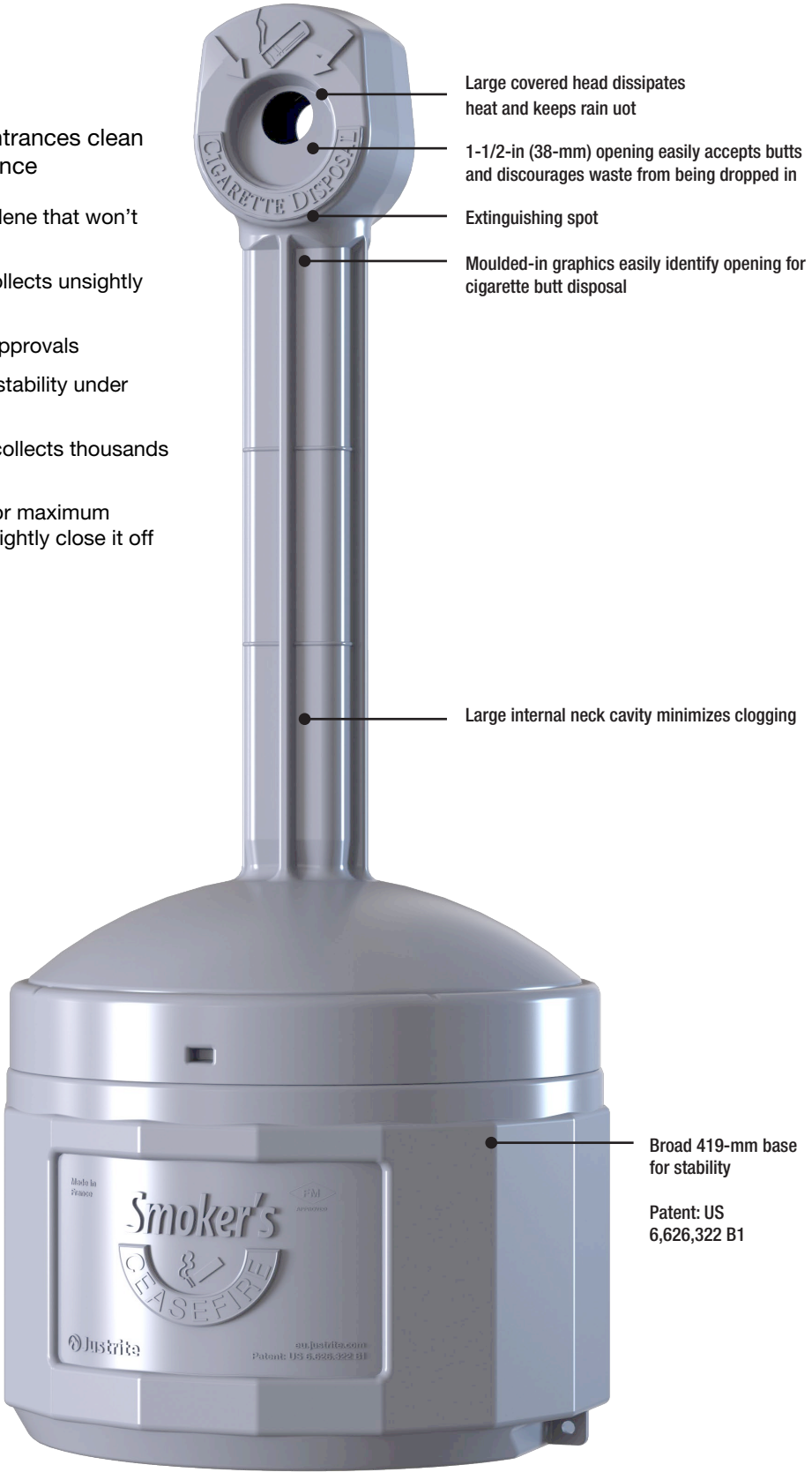
Original Smoker's Cease Fire® Cigarette-Butt Receptacles

Enhance your business image and keep entrances clean from cigarette litter, with minimal maintenance

- Made of flame-retardant and sturdy polyethylene that won't rust, dent or crack
- Innovative self-extinguishing design safely collects unsightly cigarette litter and reduces the risk of fire
- Independently tested and approved by FM Approvals
- Tie-down notches offer security and greater stability under severe weather conditions
- Units include a galvanized steel bucket that collects thousands of butts
- Optional disposable bucket liners available for maximum cleaning convenience—simply remove bag, tightly close it off and discard

Accessories:

- **26827** – Disposable liners Pack of 10*
- **26830** – Disposable liners Pack of 25*



| Capacity (L) | OD x H (cm) | Deco Black | Adobe Beige | Terra Cotta | Pewter Grey | Forest Green |
|--------------|-------------|------------|-------------|-------------|-------------|--------------|
| 15 | 42 x 98 | 26800D | 26800B | 26800T | 26800 | 26800G |

*The liner and smoker receptacle used together are an FM-approved system. The bucket liner is for hygienic purposes, and only for use within the Smoker's Cease-Fire® system.

Smoking Receptacles



Elite™ Smoker's Cease Fire® Cigarette-Butt Receptacles

Attractive contemporary styling with fire safe construction approved by FM Approvals*

- Hides unsightly cigarette butts and reduces the risk of fire
- Polyethylene construction with stainless-steel snuffer discourages use of top to put out cigarette
- Independently tested and approved by FM Approvals
- Removable steel pail with optional disposable bucket liner for easy cleaning—simply remove liner, tightly close and discard
- Optional cable kit available for severe weather or security

Accessories:

- **26827** – Disposable liners Pack of 10*
- **26830** – Disposable liners Pack of 25*
- **268506** – Brass padlock
- **26802** – Replacement pail



| Capacity (L) | OD x H (cm) | Deco Black | Cool Grey | Sierra Tan |
|--------------|-------------|------------|-----------|------------|
| 15 | 31 x 97 | 268503 | 268501 | 268502 |

* The liner and smoker receptacle used together are an FM-approved system. The bucket liner is for hygienic purposes, and only for use within the Smoker's Cease-Fire® system.

Drum Funnels & Equipment



Safety Drum Funnels

Prevent spills when transferring flammable solvents, thinners, oils or paint wastes—self-closing lid in case of fire

- Wide-mouth, galvanized steel with durable powder-coat finish
- Built-in brass flame arrester that absorbs and dissipates heat, preventing any external ignition source from reaching the drum's content
- Longer flame arrester provides greater liquid flow
- TUV and FM-approved. EPA and OSHA compliant



| Funnel DIA x H (cm) | Flame Arrester (cm) | NPT / NPS | Red | Yellow |
|---------------------|---------------------|-------------|-------|--------|
| 27 x 25 | 15 | 2 in / DN50 | 08207 | 08227 |
| 27 x 25 | 81 | 2 in / DN50 | 08205 | 08206 |

Drum Funnels & Equipment

Safety Drum Vents

Prevent dangerous drum failure while storing flammables—relieve pressure build-up due to heat

- Vents automatically relieve pressure between 3 and 8 psi (30 to 55 kPa) and include a flame arrester
- Vacuum relief during sudden cooling or liquid drain-off
- Valve within the vent is tested to allow 1 litre of water through a 9.5-mm pipe nipple in less than 6 seconds for vacuum relief during drum dispensing operations
- Vacuum relief is automatic on vertically-installed vents and manual on horizontally-installed vents



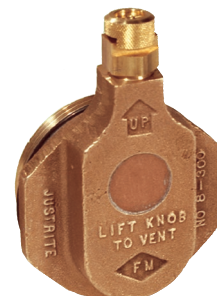
08101 Brass vertical vent for petroleum-based applications DN50



08005 Nonmetallic vertical vent, plated steel flame arrester, for petroleum based applications DN50



08006 Nonmetallic vertical vent, stainless steel flame arrester for chlorinated solvents DN50



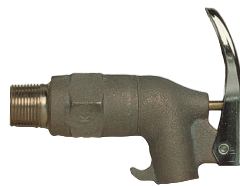
08300 Brass horizontal vent for petroleum-based applications DN50

Safety Drum Faucets

Leakproof dispensing of flammable liquids—internal flame arrester prevents flashback into the drum for added safety

- Brass construction with a polytetrafluoroethylene (PTFE) seal ensures excellent chemical resistance
- Models **08910** and **08916** feature a coupling nut that provides rotation of the spout downward after the faucet is threaded in place
- FM-approved

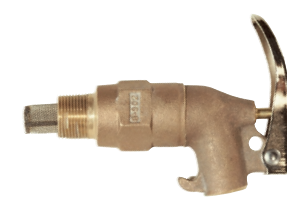
08587 Flexible faucet extension 152 mm long, stainless steel for use with 08916



08955 Brass safety faucet, DN20, viscous liquids



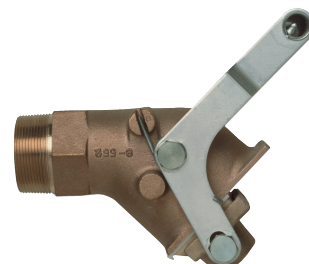
08540 Brass control flow lab safety faucet, DN20



08902 Brass safety faucet, DN20, rigid,



08910 Brass safety faucet, DN20, adjustable



08552 Brass drum gate valve, viscous liquids such as adhesives, paint or heavy oils above 2000 SSU (about 30W oil)

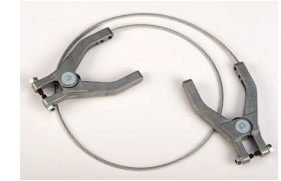


08916 Stainless steel faucet, adjustable

Antistatic Wires

Prevent sparks from static electricity generated by movement and flow of flammable liquids

- Insulated wire, 3 meters coiled, hand clamp + 6 mm terminal
- Custom length assemblies available in 1-m increments on request



08499 Flexible wire, 1 meter, dual hand clamps

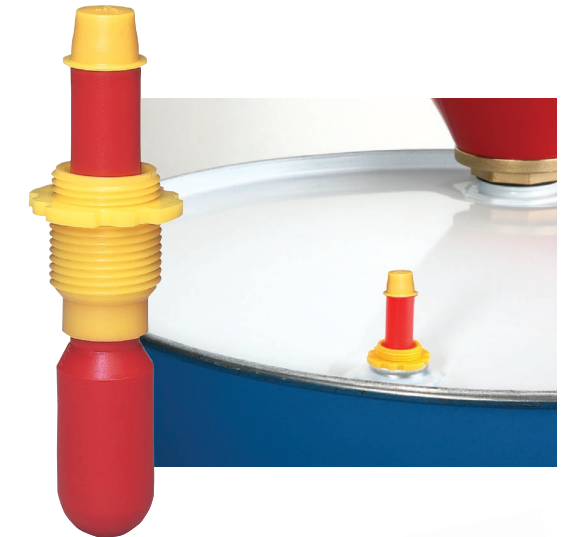


08503 Flexible wire, 1 meter, dual 6 mm terminals. Also used as an extension

08530 Drum Fill Gauge

Avoid overfilling and dangerous overflow—polyethylene pop-up gauge provides an economical way to prevent accidents

- Polyethylene gauges for use with vertically-stored drums during waste disposal operations
- Vertical drum polyethylene pop-up gauge 19 mm dia. - 127 mm L
- Custom length assemblies available in 1-m increments on request



Drum Accessories

Add convenience and safety when handling and dispensing from drums

Drum Bung Wrench

08805 - rugged, non-sparking brass. Opens 51-mm and 19-mm bung caps.



Drum Locks

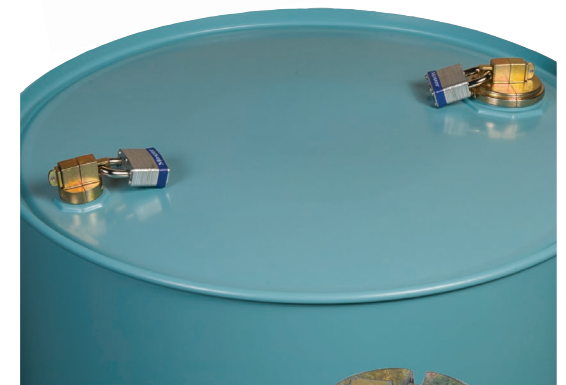
Secures contents. Corrosion resistant, non-sparking zinc die-cast. Installs over bung flange—no potential for content contamination



08510 steel model fits DN20 and DN50 bung with set of 2 padlocks



08511 steel model fits DN20 and DN50 bung with set of 2 padlocks



Spill Control & Environmental



Spill Control & Environmental

Why do I need spill containment?

Hazardous leaks and spills are a relentless challenge. Slippery floors indoors can lead to a fall accident with associated costs and severe time lost. In addition to the damaging effects to our environment, EPA fines for contamination of our outdoors can be staggering. By using Justrite spill control products, accidents and costly fines can be easily avoided.

Good spill containment practices offer these benefits:

- Keeps personnel and the environment protected
- Supports corporate and government sustainability initiatives
- Saves money by reclaiming spilled liquids
- Enhances your safety program, raises employee awareness
- Improves your company image—shows your commitment to employees and the environment
- Increases efficiencies by keeping materials organized
- Complies to laws and avoids fines—meets or supports EPA and SPCC (Spill Prevention, Control, and Countermeasure) regulations

Flexible containment

Flexible containment products are typically made of durable PVC coated fabric which folds down and stores compactly for easy portability and emergency use. They can be used indoors or out and capture anything from small leaks and drips to large-scale spills up to 22,187 litres. Patented Rigid-Lock QuickBerms® feature vehicle drive-in, drive-out capability, and offer fast, one-piece set up.

Structured containment

Structured containment products are typically used indoors to safely store drums of hazardous liquids. For outdoor use, weather-resistant sheds equipped with leakproof sumps safely store drums or IBC's. Most are constructed of rigid, durable EcoPolyBlend™ recycled content, making them twice as good for the environment. Sump capacities as high as 1,408 litres prevent groundwater contamination—and recycled content saves on oil, electricity, and landfill space.



Spill Control & Environmental

Rigid-Lock QuickBerm® offers immediate, secure deployment and no-worry, spill-readiness. Made in the Netherlands.

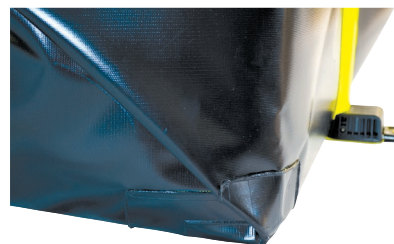
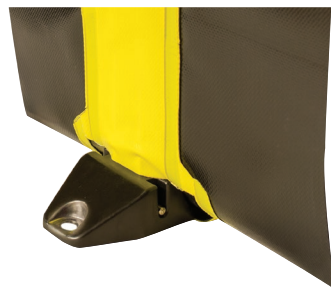
Quick-deploy design for permanent or temporary spill control



No assembly needed—saves time, ready in minutes!



A simple tug locks supports in upright position.

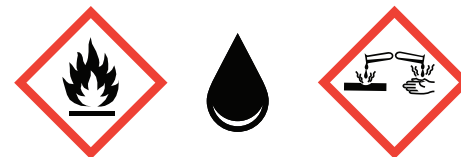


Rigid-Lock technology

Patented wall-support design maximizes inside berm space and reduces tripping hazards on the berm perimeter. They lock the sidewalls in a 30-cm high, 90° vertical position for strong structural integrity. Sidewalls lower quickly for easy drive-in and -out. Encased in protective nylon hub and in down position, support withstands vehicle traffic with 5000 kg of tire weight at each tire. Hub includes integrated holes to accept anchors (anchors not included).

CriticalCorner™

Reinforced CriticalCorner™ design featuring wraparound diagonal radio frequency welds using electromagnetic energy and pressure creates a permanent, impenetrable bond for 100% leakproof containment. Prevents billowing, unwrapping, or sagging of the corners during full containment for fluid-tight reliability. Walls include a 25-mm fray-resistant finished hem along the top rim for added wall strength and integrity. Seam seals prevent air, gas, vapours or fluids from either entering or escaping the berm.



Chemical Resistance

Modified PVC coated fabric withstands a broad range of chemicals including petroleum, oils, grease, and most acids—durable enough for extended wear. Exceptionally strong structural integrity. Withstands long-term UV exposure—great for outdoor use. Visit justrite.com for chemical compatibility charts to ensure performance and longevity.

Spill Control & Environmental



Spill Control & Environmental

Rigid-Lock QuickBerm® XT

Heavy-duty drive-in long-term spill containment for vehicles, heavy equipment and tankers

- Modified PVC coated fabric is thicker and more robust for frequent vehicle traffic and heavy applications
- Highly chemical resistant and withstands long-term UV exposure – great for outdoor use
- Patented Rigid-Lock stainless-steel wall-support system is 30 cm deep and locks at 90° for secure, leakproof containment
- Quick and easy setup – simply push on locks to lay wall down flat for an unobstructed work space and drive-through capability
- Single-piece construction with reinforced CriticalCorner™ design and radio frequency (RF) welds prevent seam leaks, provide fluid-tight reliability
- Made in The Netherlands



| Capacity (L) | Interior (m) | Wall Height (cm) | Folded (cm) | Black |
|--------------|--------------|------------------|----------------|-------|
| 2252 | 2.4 x 3.0 | 30 | 61 x 61 x 31 | 28363 |
| 4240 | 3.0 x 4.6 | 30 | 61 x 61 x 41 | 28364 |
| 9501 | 3.7 x 8.5 | 30 | 81 x 81 x 41 | 28365 |
| 16978 | 3.7 x 15.2 | 30 | 91 x 91 x 51 | 28366 |
| 18321 | 3.7 x 16.5 | 30 | 91 x 91 x 61 | 28367 |
| 22183 | 4.3 x 17.1 | 30 | 102 x 102 x 61 | 28368 |

Note (1): For exterior dimension, add 203 mm to width and length to account for support and hub.
Note (2): When selecting a berm size, allow 305 mm at entry or exit for lowering and raising the wall.

Rigid-Lock QuickBerm®

Durable drive-in spill containment for drums, IBC totes, and tanks

- Modified PVC coated fabric is suited for placing heavy materials within the working space, occasional drive-in or –out scenarios and pedestrian traffic
- Chemical resistant and withstands long-term UV exposure – great for outdoor use
- Patented Rigid-Lock integral stainless-steel wall-support system is 30 cm deep and locks at 90° for secure, leakproof containment
- Single-piece construction – patented Rigid-Lock wall-support system integral to berm provides unobstructed work space
- Quick and easy setup – no assembly required
- Integrated holes permit easy anchoring under high wind conditions. Anchor stakes not included
- Made in The Netherlands



| Capacity (L) | Interior (m) | Wall Height (cm) | Folded (cm) | Black |
|--------------|--------------|------------------|--------------|-------|
| 662 | 1.2 x 1.8 | 30 | 61 x 61 x 13 | 28512 |
| 890 | 1.2 x 2.4 | 30 | 61 x 61 x 15 | 28514 |
| 1344 | 1.8 x 2.4 | 30 | 61 x 61 x 31 | 28516 |
| 1798 | 2.4 x 2.4 | 30 | 66 x 66 x 31 | 28518 |
| 2820 | 3.0 x 3.0 | 30 | 71 x 71 x 31 | 28519 |
| 4069 | 3.7 x 3.7 | 30 | 71 x 71 x 31 | 28522 |
| 5432 | 3.7 x 4.9 | 30 | 66 x 66 x 41 | 28524 |
| 6795 | 3.7 x 6.1 | 30 | 76 x 76 x 41 | 28526 |
| 7230 | 4.9 x 4.9 | 30 | 91 x 91 x 41 | 28528 |
| 9047 | 4.9 x 6.1 | 30 | 91 x 91 x 51 | 28530 |
| 11318 | 6.1 x 6.1 | 30 | 97 x 97 x 56 | 28532 |

Note (1): For exterior dimension, add 203 mm to width and length to account for support and hub.
Note (2): When selecting a berm size, allow 305 mm at entry or exit for lowering and raising the wall.

Spill Control & Environmental

Rigid-Lock QuickBerm® Lite

Lightweight, portable, versatile containment berm deploys quickly for emergency spill response

- Tough PVC coated fabric provides broad UV and chemical resistance that withstands repeated usage
- Patented Rigid-Lock wall supports maximize usable space inside the berm and greatly reduce any tripping hazard around the perimeter. Stainless steel braces support wall at 90° locked position for secure, leakproof containment
- Folds down easily to a small size for storage in trucks, emergency vehicles, and spill kits
- Optional grates to help reduce contact with contaminated liquids by personnel or equipment



| Capacity (L) | Interior (m) | Wall Height (cm) | Folded (cm) | Yellow |
|--------------|--------------|------------------|--------------|--------|
| 299 | 1.2 x 1.2 | 20 | 41 x 31 x 13 | 28370 |
| 451 | 1.2 x 1.8 | 20 | 41 x 36 x 15 | 28372 |
| 602 | 1.2 x 2.4 | 20 | 41 x 36 x 15 | 28374 |
| 1204 | 2.4 x 2.4 | 20 | 41 x 36 x 31 | 28376 |
| 1507 | 2.4 x 3.0 | 20 | 41 x 36 x 36 | 28378 |

Note (1): For exterior dimension, add 203 mm to width and length to account for support and hub.
Note (2): When selecting a berm size, allow 305 mm at entry or exit for lowering and raising the wall.

Decon QuickBerm®

Portable multi-zone decon stations help prevent environmental contamination

- For emergency deployment, these multi-stage berms with patented interior walls create wash down zones that safely capture and contain contaminated solutions. Select from two-, three-, or four-zone models
- Lightweight PVC coated fabric provides wide range of chemical resistance. The 20-cm walls allow for easy entry and exit of the compartments. One 19-mm GHT drain fitting per zone
- Single-piece construction—patented inside wall-support system forms watertight wash down zones
- Quick and easy setup—no assembly required



Accessories:

- Optional durable, anti-slip grates keep personnel and parts away from fluids and contaminants above contaminated wash down water

| Capacity (L) | Zones | Interior (m) | Wall Height (cm) | Folded (cm) | Black |
|--------------|-------|--------------|------------------|--------------|-------|
| 1132 | 2 | 1.8 x 3.0 | 20 | 61 x 61 x 10 | 28570 |

Washdown QuickBerm®

Portable drive-through station captures contaminated water from vehicle and construction equipment wash down

- Durable vinyl coated material reinforced with radio frequency-welded, high visibility yellow runway strips that withstand drive-thru traffic, including backhoes and skid steers
- Removable 102-mm diameter foam inserts support sidewalls while 51- x 203-mm planks (not included) slide into pockets to keep end walls elevated preventing wastewater from escaping during drive-over. Simply remove foam inserts to fold material for quick and compact storage
- Two DN25 NPT fittings on each side of the berm for drainage
- Brass grommets around perimeter provide the ability to securely anchor berm during use. Anchor stakes not included
- Helps comply with EPA for storm water regulations



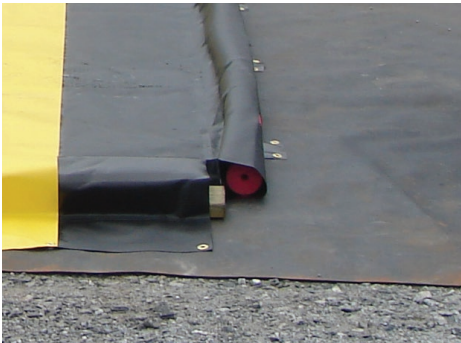
| Capacity (L) | Interior (m) | Wall Height (cm) | Folded (cm) | Black |
|--------------|--------------|------------------|-----------------|-------|
| 1609 | 3.0 x 5.5 | 10 | 102 x 102 x 61 | 28578 |
| 2840 | 3.7 x 7.9 | 10 | 102 x 102 x 91 | 28579 |
| 6815 | 4.3 x 16.5 | 10 | 102 x 102 x 122 | 28581 |

Note (1): For exterior dimension, add 203 mm to width and 914 mm length.

Spill Control & Environmental

Quick Berm Ground Protection Accessories

Improve berm longevity without sacrificing functionality



Ground Mats

Create a smooth, uniform deployment area with this heavy-duty woven fabric. Place under berm for improved wear resistance against rocks and construction debris.

| Length (M) | Ground Mat 1.8 m Wide | Track Mat 0.9 m Wide | Track Runner 0.9 m Wide |
|------------|-----------------------|----------------------|-------------------------|
| 1.8 | 28338 | 28336 | 28334 |
| 3 | 28344 | 28342 | 28340 |
| 4.9 | 28350 | 28348 | 28346 |
| 8.5 | 28356 | 28354 | 28352 |
| 17.1 | 28362 | 28360 | 28358 |



Track Mats

Position inside the berm for extra protection along tire paths. Thick durable, black woven fabric protects the floor and walls from tire abrasion caused by skidding, turning, and braking.



Track Runners

Place this high visibility, yellow vinyl coated fabric inside the berm for moderate protection against tire abrasion.

Berm Repair Kits

Repair lightly damaged berms with small holes, abrasion points or tears to maintain fluid-tight reliability and compliance

- Scissors and Utility Knife
- Pressure Application Roller
- PVC Cement
- Sand Paper
- 10-square feet of coated fabric repair material

28327 Modified vinyl repair kit

28329 PVC coated fabric repair kit



28327

Pop-Up Pool

Economical emergency spill containment - simply unfold, shake from foam ring top, and place under leaking equipment

- Contain spills from punctured saddle tanks, or leaking drums, hydraulic lines, pipes, and machinery
- Durable vinyl fabric is 20% heavier than other models on the market, providing increased abrasion resistance and more reliable seam adhesions
- Embedded foam ring top raises containment wall as fluid level increases
- Yellow colour provides visibility and easy identification



28319

| Capacity (L) | Interior Dia (m) | Wall Height (cm) | Folded (cm) | Yellow |
|--------------|------------------|------------------|-----------------|--------|
| 76 | 0.7 | 30 | 457 x 305 x 76 | 28319 |
| 250 | 1.2 | 36 | 457 x 406 x 152 | 28321 |
| 379 | 1.3 | 48 | 610 x 610 x 76 | 28323 |
| 568 | 1.6 | 41 | 610 x 610 x 127 | 28325 |

Maintenance Spill Berms

Compact and flexible spill containment deploys instantly in the shop or field

- Quickly contain minor spills and leaks during temporary storage of drums, machine parts, batteries, and equipment
- Lightweight PVC coated fabric provides broad UV and chemical resistance
- Encased urethane foam sidewalls offer easy roll-through access without the need for a ramp
- Walls quickly spring back into place with no memory loss
- No assembly required — simply unfold and use
- Anchor berm in place using the brass grommets in each corner. Anchor stakes not included
- Order optional grates to keep products and machinery above fluid



28400 with 1642S optional grate

| Capacity (L) | Interior Dia (m) | Wall Height (cm) | Folded (cm) | Yellow |
|--------------|------------------|------------------|--------------|--------|
| 19 | 60 x 60 | 5 | 76 x 76 x 5 | 28414 |
| 38 | 60 x 120 | 5 | 76 x 137 x 5 | 28416 |
| 76 | 120 x 120 | 5 | 76 x 76 x 15 | 28418 |
| 151 | 120 x 240 | 5 | 76 x 76 x 31 | 28421 |
| 167 | 180 x 180 | 5 | 61 x 61 x 41 | 28422 |
| 511 | 300 x 340 | 5 | 71 x 71 x 41 | 28424 |
| 833 | 300 x 550 | 5 | 76 x 76 x 41 | 28426 |
| 38 | 60 x 60 | 10 | 76 x 76 x 10 | 28400 |
| 76 | 60 x 120 | 10 | 41 x 76 x 41 | 28402 |
| 151 | 60 x 240 | 10 | 71 x 71 x 41 | 28404 |
| 151 | 120 x 120 | 10 | 51 x 61 x 41 | 28406 |
| 227 | 120 x 180 | 10 | 61 x 61 x 41 | 28408 |
| 303 | 120 x 240 | 10 | 91 x 91 x 41 | 28410 |
| 341 | 180 x 180 | 10 | 97 x 97 x 41 | 28412 |

Note: For exterior dimension on 102 mm models, add 305 mm to width and length. For exterior dimension on 51 mm models, add 152 mm to width and length.

Spill Control & Environmental



Make a Berm™ Kit

Make-A-Berm™ Kit can easily be installed on site to fit the layout without having to move existing equipment.

Connect multiple berm pieces to fit your containment area. Non-absorbent modified PVC coated fabric provides a highly resistant barrier to contain oils, gasoline, acids and other liquids.

For a liquid-proof seal, a semi-permanent installation to the floor is available with the use of polyether-based adhesive. Flexible foam inserts are crush resistant and return to their original shape with no memory loss after foot traffic or hand truck equipment use.

- Multiple Make-A-Berm components
- Straight pieces can be linked together or combined with corners to create a complete containment solution
- Easily cut the berm pieces to fit around the containment area
- Contains spills and leaks around unique equipment and situations
- Different sizes ideal for small to medium capacity containment needs



| Art. Nr. | Capacity (Liter) | Dimensions | Weight (kg) |
|----------|------------------|-------------------|-------------|
| 28465 | 737 | 15.24 m x 50.8 mm | 9.5 |

Spill Control & Environmental

Ceiling Leak Diverter

Redirect roof or pipe leaks to prevent water damage to protect your personnel, equipment, and inventory

- Durable, puncture resistant, and watertight PVC-coated yellow fabric channels overhead leaks to containers or floor drains
- Connect to a standard garden hose to drain water safely away. Flow rate of 12.5 L/min
- Available with high strength magnets for steel rafter attachment, or grommets for bungee or zip tie attachment
- Constructed with cinched corners for quick and easy installation

| W x L (m) | Folded (cm) | Grommets | Magnets |
|-----------|--------------|----------|---------|
| 1.5 x 1.5 | 46 x 31 x 5 | 28300 | 28302 |
| 2.1 x 2.1 | 46 x 41 x 10 | 28304 | 28306 |
| 3.0 x 3.0 | 46 x 41 x 15 | 28308 | 28310 |
| 3.7 x 3.7 | 46 x 41 x 15 | 28312 | 28314 |
| 4.6 x 4.6 | 46 x 41 x 25 | 28315 | |
| 6.1 x 6.1 | 46 x 41 x 36 | 28318 | |



Waterproof Tarps

Protect drums and equipment to avoid contamination or damage

- Shield equipment from the harsh effects of direct sunlight, sand, dust, and rain with these protective covers
- Waterproof, lightweight vinyl coated fabric reduces the effect of the environment
- Brass grommets in corners offer a convenient way to secure the tarp in place
- Use under berm products to provide additional puncture and wear-resistance

| W x L (m) | Folded (cm) | Black |
|-----------|--------------|-------|
| 1.5 x 1.5 | 46 x 41 x 15 | 28432 |
| 1.5 x 3.0 | 46 x 41 x 15 | 28434 |
| 3.0 x 3.0 | 46 x 41 x 15 | 28436 |
| 3.0 x 3.7 | 46 x 41 x 15 | 28438 |
| 3.0 x 6.1 | 46 x 41 x 36 | 28439 |



Water-Filled Drain Covers

Ensure regulatory compliance and prevent run-off pollutants from entering storm water drains

- Deploy cover as a preventative measure to seal drains before washdowns, maintenance, or other clean up tasks
- Long-lasting durable modified vinyl construction resists damage caused by UV rays
- Features easy-open push plug for filling with standard water hose
- Order a cover size that overlaps drain opening at least 152-mm on each edge. To prevent edges from losing contact with ground surface, do not fill over 127-mm in height



| W x L (m) | Folded (cm) | Black |
|-----------|--------------|-------|
| 0.8 x 0.8 | 38 x 38 x 8 | 28468 |
| 1.1 x 1.1 | 41 x 46 x 10 | 28470 |
| 1.1 x 1.7 | 41 x 46 x 15 | 28472 |
| 1.5 x 1.5 | 74 x 74 x 15 | 28474 |

Water-Filled Boom Diverters

Divert and control fluid for easy clean up or recovery - helps comply with EPA for storm water regulations

- Use water filled booms in storm water management, portable washdown/pressure washing diversion, and spill diversion
- Flexible PVC film construction conforms to uneven surfaces such as asphalt or concrete to form a diversionary barrier away from storm drains or as a holding area for wet vacuum operations
- Features easy-open push plug for filling with standard water hose



| W x L (m) | Folded (cm) | Blue |
|------------|--------------|-------|
| 1.5 x 0.2 | 15 x 31 x 8 | 28450 |
| 3.0 x 0.2 | 15 x 36 x 10 | 28452 |
| 7.6 x 0.2 | 25 x 46 x 15 | 28454 |
| 15.2 x 0.2 | 25 x 46 x 15 | 28456 |

Drip Pads

Capture small oil leaks and drips before they contaminate the ground or create unsafe work surfaces

- Made from UV- and chemical-resistant modified PVC
- Patented design feature includes a coated mesh outer layer to trap coarse debris
- Replaceable, oil-only sorbent within a welded leakproof barrier
- Rated for drive over applications, pads include brass grommets in opposing corners for anchoring. Anchoring stakes not included
- Pads come in two sizes; extended model is weighted to keep it down in high winds. Outer shell is reusable with optional refill sorbent packs



| Capacity (L) | W x L (cm) | Drip Pad + 5 Sorbents | Refill 5 Sorbents |
|--------------|------------|-----------------------|-------------------|
| 5 | 53 x 58 | 28458 | |
| 7 | 61 x 91 | 28459 | 28461 |

Spill Control & Environmental

Mini-Berm Flex Tray

Compact, portable spill control for harsh and hazardous chemicals

- Safe and reliable for table top parts cleaning and fluid transfer operations involving petroleum products and acids
- Made from a robust modified PVC-coated fabric
- Rigid corner supports and sturdy foam walls
- Each berm comes with a DN25 NPT drain fitting to attach hose and transfer fluids for disposal
- Easy to fold and store; utility strap included
- Helps comply with EPA for containment and spill prevention (SPCC)



| Capacity (L) | Interior Dia (m) | Wall Height (cm) | Folded (cm) | Black |
|--------------|------------------|------------------|---------------|-------|
| 114 | 0.9 x 0.9 | 15 | 13 x 127 x 18 | 28442 |
| 208 | 1.2 x 1.2 | 15 | 13 x 156 x 18 | 28444 |
| 265 | 1.2 x 1.5 | 15 | 20 x 152 x 20 | 28446 |
| 416 | 1.5 x 1.8 | 15 | 20 x 158 x 20 | 28448 |

EcoPolyBlend™ Spill Tray

Lightweight and low-profile design for small-scale spill control

- Made of 100% recycled polyethylene, these eco-friendly spill trays will not rust or corrode
- Raised rib bottom adds rigidity and keeps contents out of spills—perfect for pouring and filling applications



| Capacity (L) | External W x D (cm) | Wall Height (cm) | Interior (cm) | Black |
|--------------|---------------------|------------------|---------------|-------|
| 45 | 117 x 41 | 14 | 103 x 26 x 12 | 28715 |
| 75 | 96 x 66 | 14 | 82 x 52 x 12 | 28716 |
| 75 | 121 x 58 | 14 | 106 x 44 x 12 | 28717 |
| 87 | 96 x 86 | 14 | 81 x 72 x 12 | 28718 |
| 109 | 119 x 83 | 14 | 105 x 70 x 12 | 28719 |

EcoPolyBlend™ Accumulation Centres and Ramp

Combine units to create your own customized spill-control system

- Use optional joining clips (28926) to firmly lock units together to combine 2-, 4-, 6-, and 8-drum modular units to create your own customized system
- Made from polyethylene, these accumulation centres are nearly impervious to chemicals, including acids and corrosives
- Low-profile centres only measure 14 cm high for easy handling of drums
- Seamless construction eliminates leaks, making them ideal for drum filling and dispensing operations
- Self-locating grates won't ride-up and are removable for easy cleaning
- Sumps remain separate and clips can be removed for easy repositioning
- Black models are made from 100% recycled polyethylene. Sump base also available in non-recycled yellow colour. EPA compliant, supports SPCC, and meets NFPA 1 2009 edition and IFC fire codes
- 28926 Joining clips available



| Number of Drums | Sump Capacity (L) | Load Capacity (kg)* | W x D X H (cm) | Black | Yellow |
|-----------------|-------------------|---------------------|----------------|-------|--------|
| 1 | 45 | 567 | 64 x 64 x 14 | 28653 | 28652 |
| 2 | 90 | 1134 | 125 x 64 x 14 | 28655 | 28654 |
| 4 | 185 | 2268 | 125 x 125 x 14 | 28657 | 28656 |
| 6 | 276 | 3402 | 186 x 125 x 14 | 28659 | 28658 |
| 8 | 371 | 4536 | 246 x 126 x 14 | 28661 | 28660 |



28927 Sump-to Sump Drain Kit

- Includes joining clips and transfer tube for applications requiring a continuous sump
- Kit allows you to join centres together, on-site, for full compliance with regulations when sump capacities reach 270 litres
- Includes one pair stainless steel joining clips, one pair rubber grommets, one polytetrafluoroethylene (PTFE) transfer tube (Patent No US 6,622,879,B1)

Companion Ramp

- Load and unload heavy drum with ease
- Anti-skid ribs provide maximum safety
- Place the ramp anywhere on accumulation centres size 2-drum or larger
- Available in 28687 Black and 28650 Yellow

*Loads are stated as a total safe allowable uniform distributed load and apply to service temperature range of -34° C to 49° C

Spill Control & Environmental

EcoPolyBlend™ Spill Control Pallets

Keep workers safe from accidental slips indoors and avoid costly hazmat cleanup

- Seamless construction eliminates leaks, making them ideal for drum filling and dispensing operations—models available with and without drain
- High density polyethylene (HDPE) construction with lead-free UV protectant provides excellent chemical resistance and impact durability for long life
- Black models and grates made with 100% recycled HDPE
- Removable HDPE flat top grates for simplified cleaning
- Forklift pockets make relocation easy on 2- and 4-drum models
- Load and unload heavy drums with ease using optional ramp with anti-skid diamond pattern—use with most pallet sizes
- EPA compliant and supports SPCC
- Available ramps in **28688** Black and **28620** Yellow for model 28635 4 drum square pallet
- Available replacement grates for **28259** 2-drum pallets and **28260** 1- or 3-drum pallets



| Number of Drums | Sump Capacity (L) | Load Capacity (kg)* | W x D x H (cm) | Black | Black with Drain | Yellow | Yellow with Drain |
|-----------------|-------------------|---------------------|----------------|-------|------------------|--------|-------------------|
| 2 | 250 | 1134 | 125 x 64 x 46 | 28623 | 28625 | 28622 | |
| 3 | 284 | 1701 | 186 x 64 x 30 | 28627 | 28629 | 28626 | 28628 |
| 4 | 284 | 2268 | 246 x 64 x 23 | 28631 | | | 28632 |
| 4 | 276 | 2268 | 125 x 125 x 26 | 28635 | 28637 | 28634 | 28636 |

*Loads are stated as a total safe allowable uniform distributed load and apply to service temperature range of -34° C to 49° C

EcoPolyBlend™ Single- and Double-Drum Collection Centres

All-weather construction stands up to the harshest environments

- Chemical-resistant 100% recycled polyethylene offers effective and economical spill control for 200-litre drums
- Lids include lock to prevent unauthorized access
- EPA compliant, supports SPCC, meets NFPA 1 2009 edition and IFC fire codes
- Forklift channels allow for easy relocation on double-drum centres (when empty)
- **28270** steel drum dolly available for transporting single-drum centre
- EcoPolyBlend™ Spill Control Funnels available as a cost-effective way to collect liquids and keep drum tops clean. **28680** for Non-Flammables and **28681** for Flammables
- **28682** Funnel cover available

| Number of Drums | Sump Capacity (L) | OD x H/W x D X H (cm) | Black |
|-----------------|-------------------|-----------------------|-------|
| 1 | 250 | 84 x 81 | 28685 |
| 2 | 681 | 152 x 99 x 119 | 28683 |

EcoPolyBlend™ Spill Containment Caddy

Convenient handling, dispensing and built-in spill containment—all in one!

- Durable 100% recycled polyethylene (black model only) provides corrosion resistance and leakproof protection
- Rubber 254-mm wheels easily roll over uneven terrain
- Allows one person to transport a full 200-litre drum
- Ergonomic design with tilt/stop reduces back strain
- Two tension straps hold drum securely in place
- 250-litre spill sump contains chemical spills—meets EPA and supports SPCC

| Number of Drums | Sump Capacity (L) | Load Capacity (kg)* | W x D x H (cm) | Black | Yellow |
|-----------------|-------------------|---------------------|----------------|-------|--------|
| 1 | 250 | 567 | 81 x 183 x 66 | 28665 | 28664 |

EcoPolyBlend™ Drum Management System

Organize drums for maximum efficiency, productivity and cost-savings

- 100% recycled moulded polyethylene construction
- Stackable design stores up to four 110- and/or 200-litre Class 1B or 1C drums
- Open-view containment sump makes it easy to see spills
- Meets EPA and supports SPCC
- **28669** Black and **28668** Yellow stack module with strap holds two additional drums doubling the capacity
- **28671** Dispensing shelf with 27 kg load capacity mounts securely to stack module

| Number of Drums | Sump Capacity (L) | Load Capacity (kg)* | W x D x H (cm) | Black | Yellow |
|-----------------|-------------------|---------------------|----------------|-------|--------|
| 2 | 250 | 1388 | 125 x 150 x 66 | 28667 | 28666 |

*Loads are stated as a total safe allowable uniform distributed load and apply to service temperature range of -34° C to 49° C



28685 with funnel 28680 on 28270 steel dolly



28665 Open-view Sump



Spill Control & Environmental



EcoPolyBlend™ IBC Pallet Shed

Reliable spill protection and safe storage for IBCs

- Compliant storage for 1000- or 1250-litre IBCs**
- Made of durable 40% recycled polyethylene offering excellent chemical resistance
- Sturdy pillar supports accept up 4082-kg
- Removable pillars for easy clean-up
- **28690** Replacement reach pole available



| Number of IBCs | Sump Capacity (L) | Load Capacity (kg)* | W x D x H (cm) | Black/Yellow |
|----------------|-------------------|---------------------|-----------------|--------------|
| 1 | 1408 | 4082 | 154 x 174 x 264 | 28677 |

EcoPolyBlend™ IBC Pallet

Reliable spill protection for IBCs

- Compliant storage for 1000 or 1250-litre IBCs**
- Made of durable recycled polyethylene offering excellent chemical resistance
- Large leakproof sump protects against high volume spills
- Forklift pockets for easy relocation when empty



| Number of IBCs | Sump Capacity (L) | Load Capacity (kg)* | W x D x H (cm) | Black |
|----------------|-------------------|---------------------|----------------|-------|
| 1 | 1408 | 4082 | 140 x 140 x 95 | 28674 |

EcoPolyBlend™ DrumSheds™

Safe, secure, and compliant outdoor storage for drums

- Made of eco-friendly, weather resistant 50% recycled polyethylene
- Roll top doors allow access from front or rear
- Features grounding capability, integral anchor bolts, and moulded lugs for padlocks
- A spacious interior enables safe addition of funnels or pumps
- EPA compliant and supports SPCC
- Ramp available in **28679** black and **28678** yellow



| Number of Drums | Sump Capacity (L) | Load Capacity (kg)* | W x D x H (cm) | Black/Yellow |
|-----------------|-------------------|---------------------|-----------------|--------------|
| 2 | 254 | 1134 | 154 x 149 x 191 | 28675 |
| 4 | 301 | 2268 | 154 x 174 x 191 | 28676 |

EcoPolyBlend™ Drum Pallet

Safe, secure, and compliant storage for drums

- Made of eco-friendly, weather resistant 50% recycled polyethylene
- Leakproof pallet sump has removable deck grating for easy clean-up
- Forklift pockets make it easy to relocate empty pallets
- EPA compliant and supports SPCC
- Ramp available in **28679** black and **28678** yellow



| Number of Drums | Sump Capacity (L) | Load Capacity (kg)* | W x D x H (cm) | Black |
|-----------------|-------------------|---------------------|----------------|-------|
| 2 | 254 | 1134 | 140 x 114 x 23 | 28672 |
| 4 | 301 | 2268 | 140 x 140 x 23 | 28673 |

*Loads are stated as a total safe allowable uniform distributed load and apply to service temperature range of (-34 C to 49 C

**Accepts IBCs up to 1219-mm W x 1219-mm D x 1346-mm H

Spill Kits



Spill Kits

- Spill response kit offers complete solution for effective clean up and disposal
- Kit includes a selection of pads, socks and pillows.
- Selection of kits for small to medium spills up to 120 liters
- Effectively labeled and colour coded for quick identification for chemical, oil or universal spills
- Available in 30 liter and 50 liter bags, and a 200 liter container



| Art. Nr. | Liter Capacity | Description | Weight (kg) |
|------------------|----------------|-----------------------------|-------------|
| Universal | | | |
| JABK1030UL | 30 | Universal Spill Kit - 30 L | 4.6 |
| JABK1050UL | 50 | Universal Spill Kit - 50 L | 5.9 |
| JABK1120UL | 120 | Universal Spill Kit - 120 L | 21.9 |
| Oil | | | |
| JABK1030OL | 30 | Oil-Only Spill Kit - 30 L | 3.4 |
| JABK1050OL | 50 | Oil-Only Spill Kit - 50 L | 5.1 |
| JABK1120OL | 120 | Oil-Only Spill Kit - 120 L | 16.4 |
| Chemical | | | |
| JABK1030CL | 30 | Chemical Spill Kit - 30 L | 9.7 |
| JABK1050CL | 50 | Chemical Spill Kit - 50 L | 9.7 |
| JABK1120CL | 120 | Chemical Spill Kit - 120 L | 9.7 |

Absorbents



Absorbents

Absorbent Rolls

Absorbent rolls come in perforated sheets that are cut to size for longer lengths in walkways or under machinery and smaller sizes for absorbing incidental spills.



Absorbent Pads

Absorbent pads for absorbiing incidental spills or leaks and cleaning tools and equipment to remove traces of chemicals or oils



Absorbent Socks

Absorbent socks are long and flexible to encircle spills or equipment to contain the liquid and prevent spreading.



| Art. Nr. | Description | Dimensions (mm) | Weight (kg) |
|--------------|--------------------------------------------------------------------|-----------------|-------------|
| Rolls | | | |
| JABR5040UL | Double Weight Rolls - Universal - Pack of 100 | 50 cm x 40 cm | 6.3 |
| JABR5040OL | Double Weight Rolls - Oil - Pack of 100 | 50 cm x 40 cm | 6.3 |
| JABR5040CL | Double Weight Rolls - Double Weight Rolls - Chemical - Pack of 100 | 50 cm x 40 cm | 6.3 |
| Pads | | | |
| JABP5040UL | Single Weight Pads - Universal - Pack of 200 | 50 cm x 40 cm | 6.7 |
| JABP5040OL | Single Weight Pads - Oil - Pack of 200 | 50 cm x 40 cm | 6.7 |
| JABP5040CL | Single Weight Pads - Chemical - Pack of 200 | 50 cm x 40 cm | 6.7 |
| Socks | | | |
| JABS7512UL | Absorbent Sock - Universal - Pack of 20 | 7.5 cm x 120 cm | 9.7 |
| JABS7512OL | Absorbent Sock - Oil - Pack of 20 | 7.5 cm x 120 cm | 9.7 |
| JABS7512CL | Absorbent Sock - Chemical - Pack of 20 | 7.5 cm x 120 cm | 9.7 |

Spill Control & Environmental

Why do I need a Aerosolv® Aerosol Can Recycling System?

Companies can pay hefty fines for the improper handling of hazardous waste. Aerosol cans are no exception. Considered hazardous waste while still under pressure, it is illegal for businesses to dispose of spent aerosol cans in the trash.

With Aerosolv, you can safely puncture the aerosol can, relieve the can's pressure, filter VOCs, and collect any residual liquids. Punctured, discharged cans do not meet the definition of hazardous waste per EPA 40CFR 261.23(a)(6), and thus can be treated as recyclable scrap steel.

Over 3 billion aerosol cans are produced annually in the U.S. alone.* Turning aerosol cans from hazardous waste to recyclable steel not only avoids costly fines, it helps lower the impact on our environment and saves money.

Benefits of using Aerosolv® Systems:

- Saves companies thousands on hazardous waste disposal cost
- Minimizes hazardous waste streams and saves on landfill space for a cleaner environment
- Recycled steel turns into recycling profits

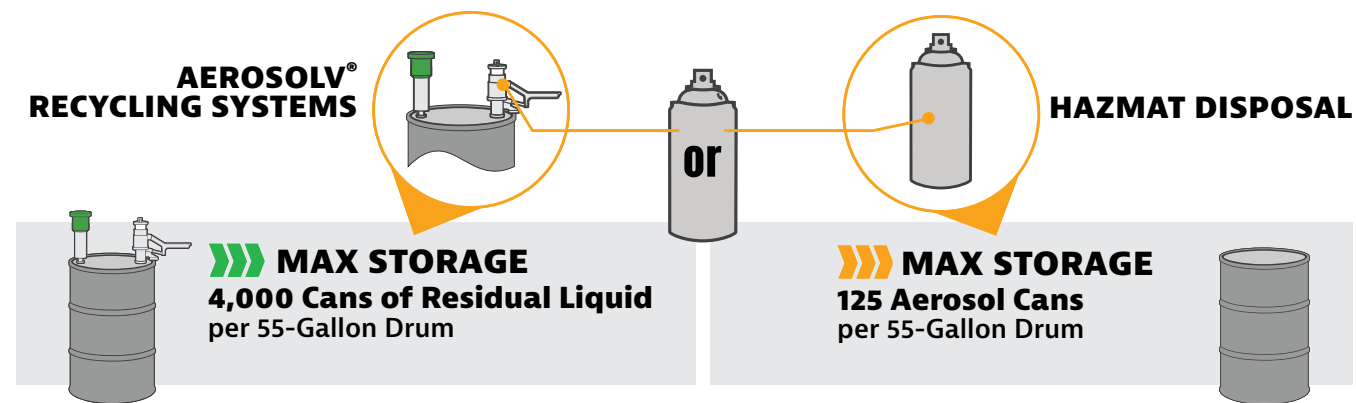
*Source: Consumer Specialty Products Association (CSPA)

Did you know?



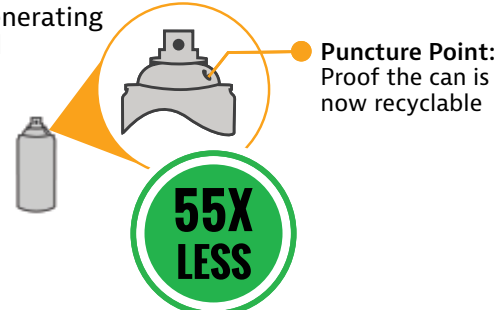
Approximately 4 aerosol cans equal one pound of steel. Every pound of steel recycled saves 5,450 BTUs of energy ... enough to light a 15-watt compact fluorescent light (CFL) bulb for over 100 hours.†

†Source: PA Dept. of Environmental Protection

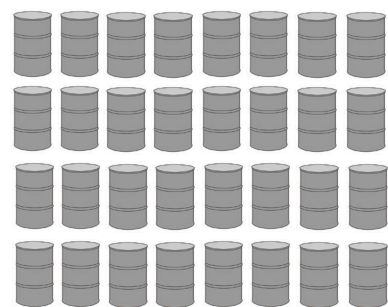


WHAT IS THE IMPACT AND COST OF 4,000 CANS?

- Disposal of one 55-Gallon Drum
- RCRA Empty Compliance
- Revenue Generating Scrap Metal



Disposal of thirty-two 55-Gallon Drums



28202 Aerosolv® Aerosol Can Recycling System

Safely convert used aerosol cans to a non-hazardous material—reducing disposal costs and minimizing waste

- Punctured/discharged cans don't meet definition of hazardous waste EPA 40 CFR 261.23(a)(6), and be used as recyclable metal
- Aluminium body with moving parts of 308 stainless steel
- Includes combination filter, safety goggles, and anti-static ground wire with alligator clip
- Accepts standard sized cans with a maximum height of 215-mm
- Non-spark pin punctures can, releasing residual liquids into collection drum
- Bottom cartridge converts liquid into droplets for safe drainage
- Top activated carbon filter cartridge acts as a replacement reminder



Accessories and Replacement Parts:



28197 Combination coalescing[†]/carbon filter (non-colour changing)



28224 Colour changing combination coalescing[†]/carbon filter



28198 Activated carbon cartridge (2pk) (non-colour changing)



28223 Colour changing activated carbon cartridge (2pk)



28200 Aerosolv® maintenance repair kit (for use with any Aerosolv®)



28111 Replacement Aeroprene (polychloroprene) gasket



28181 Replacement poly sleeve

[†] Coalescing filter can only be purchased in combination with a carbon filter.

Spill Control & Environmental

28230 Aerosolv® Super System

ETV certified system safely recycles spent aerosol cans, reduces disposal costs, and minimizes waste

- Offers greater vapour reduction and added security
- Protective coating for easy cleaning
- Lockout and shut-off mechanism seals the system and drum when not in use to eliminate the escape of hazardous vapours
- Includes saturation indicating carbon filter, a padlock with key, anti-static ground wire with C-clamp, and safety goggles, and built-in counter
- **28228** Replacement colour changing carbon cartridge with auto shut-off valve available
- **28229** Two-pack replacement colour changing carbon filter available



28231 Aerosolv® Dual-Compliant System

Designed to comply with California's vapour emission regulation SB1158, ETV certified

- Offers greater security featuring a shut-off valve in the puncturing unit and a check valve in the carbon cartridge to prevent off-gassing
- Poly lid cover containment sump help with compliance when you are accumulating or transporting processed aerosol cans for scrap
- Includes a combination coalescing/saturation indicating carbon filter, a padlock, antistatic ground wire with C-clamp, safety goggles, and built-in counter
- **28228** Replacement colour changing carbon cartridge with auto shut-off valve available
- **28229** Two-pack replacement colour changing carbon filter available



28190 Prosolv® System

Safely recycle depressurized propane cylinders, and eliminate an entire category of hazardous waste

- Removes the sealing sleeve and internal valve stem from small 0.45 kg propane, propylene, MAPP, and 19-mm male threaded calibration gas cylinders with Schrader valves (do not use with oxygen bottles)
- Empties and filters propellants from cylinders converting them into non-hazardous recyclable material
- Includes vent device, carbon filter, antistatic wire, safety goggles, sleeve removal tool, and 40 certification tags
- **28191** Replacement filter with 40 tags available



Warehouse Shipping Locations

Illinois

Justrite Warehouse
6674 E. County Road 1000N
Mattoon, IL 61938
Tel: 1-217-234-7350
Fax: 1-217-234-3160

China & APAC

Justrite China
Wuxi, China
Tel: 86-400-812-1906
infoCN@justrite.com

California

Western Safety Associates
267 Winfield Circle
Corona, CA 92880
Tel: 1-951-371-8685
Fax: 1-951-371-2496

United Kingdom

Justrite U.K.
Stockport, United Kingdom
Tel: 0800 0939975
infoUK@justrite.com

North Carolina

Justrite Southeast
Distribution Ctr.
Tel: 1-800-798-9250
Fax: 1-800-488-5877

Middle East

Justrite Dubai
United Arab Emirates
Tel: +971 6526 1997
infoME@justrite.com

Europe

Justrite Europe
Achterzeedijk 57
2992SB Barendrecht,
The Netherlands
Tel: +31 180 615 744
infoEU@justrite.com

Operations

U.S.A.

Justrite Safety Group
3921 DeWitt Avenue
Mattoon, IL 61938 U.S.A.
*Manufacturing, Finance (billings),
Purchasing, Information Technology &
Human Resources*
Tel: 1-217-234-7486
Fax: 1-217-234-7632

China

Justrite Safety Technology (Wuxi) Co., Ltd.
No. 31 Xixing Road, Xinwu District, Wuxi,
China, 214028
Tel: +86-400-812-1906
Fax: +86-510-85305038
Email: infoCN@justrite.com

Corporate - U.S.A.

Justrite Safety Group
2454 Dempster Street
Des Plaines, IL 60016 U.S.A.
Sales, Marketing & Administrative
Tel: 1-847-298-9250
Fax: 1-847-298-9261



Customer Service

North America

Tel: 1-800-798-9250
Fax: 1-800-488-5877
custserv@justrite.com

Latin America

Tel: 1-217-234-7494
Fax: 1-217-234-7420
internationalcs@justrite.com

EMEA

Tel: +31 180 615 744
Fax: +31 180 611 551
salesEU@justrite.com

Return shipments must be authorized. Call customer service for RMA form.

Justrite and Chemical Compatibility

Because of the complex nature of chemicals, Justrite cannot offer specific recommendations on chemical compatibility. Your chemical supplier, SDS sheets, or other expert sources should be consulted. To aid in your decision process to select the appropriate Justrite product for your application, contact Justrite Customer Service to obtain sample material parts for you to test with the chemicals you are using. Justrite makes no guarantee of results and assumes no obligation or liability in connection with the use of these products and their application relative to their chemical compatibility. It is the end user's sole responsibility to determine the nature of the materials to be contained and to select the proper product suitable for a particular application. Furthermore, it is the end user's responsibility to insure that the product selected is suitable for its intended use. **JUSTRITE MAKES NO WARRANTY, EXPRESSED OR IMPLIED OF MERCHANTABILITY OR FITNESS FOR PURPOSE,** and assumes no liability in connection with any product made or sold by Justrite with regard to its use or chemical compatibility.

Justrite Limited Warranty

Ask for Terms and Conditions where limited warranty is included.

Justrite Printed Catalogue

Warranty Disclaimer: Justrite has made a diligent effort to illustrate and describe the products in this catalogue accurately; however, such illustrations and descriptions are for the sole purpose of identification, and do not express or imply a warranty that the products are MERCHANTABILITY, or FIT FOR A PARTICULAR PURPOSE, or that the products will necessarily conform to the illustrations or descriptions. Always check for product specifications prior to purchase. No warranty or affirmation of fact, express or implied, other than as set forth in the limited warranty statement above is made or authorized by Justrite. Justrite reserves the right to correct publishing errors.

Note: Justrite metric equivalents may be inconsistently noted. Capacities shown may be nominal because some products may hold more than listed to accommodate manufacturing tolerances and expansion, as well as others are designed to accommodate additives which is a common practice with safety can usage. Additionally, "rounding" may occur to simplify data or where catalog space is restrictive. In other cases nominal capacities have simply become accepted "industry practice" over the last 100 years since Justrite has been in business.

Shipping weights are approximate and are subject to change.



For over a century, organizations around the world have relied on Justrite to keep their workers and workplaces safe. Justrite provides expert advice and leading industrial safety solutions to help customers meet—and exceed—compliance regulations.

Worker & Workplace Safety

- Safety & Storage Cabinets
- Safety Cans & Containers
- Smoking Receptacles
- Gas Cylinder Handling Equipment
- Drum Funnels & Equipment
- Outdoor Safety Lockers

Environmental Protection

- Spill Containment
- Secondary Containment
- Aerosol Recycling

*To learn more about our full portfolio of products, please visit **eu.justrite.com***